

VIPA HMI Touch Panel

TP-ECO | 62P-NHC0 | Manual

HB160 | TP-ECO | 62P-NHC0 | GB | 13-45

VIPA GmbH
Ohmstr. 4
91074 Herzogenaurach
Telephone: +49 9132 744-0
Fax: +49 9132 744-1864
email: info@vipa.com
Internet: www.vipa.com

Table of contents

1	General	4
1.1	Copyright © VIPA GmbH	4
1.2	About this manual.....	5
1.3	Safety information.....	6
2	Hardware description	8
2.1	Safety Information for Users.....	8
2.2	Properties.....	8
2.3	Structure.....	10
2.3.1	Overview.....	10
2.3.2	Interfaces.....	12
2.3.3	Memory management.....	16
2.4	Dimensions.....	17
2.5	Technical Data.....	17
3	Deployment Touch Panel	20
3.1	Installation.....	20
3.2	Installation of the optional MPI/PROFIBUS DP interface	21
3.3	Commissioning.....	23
3.3.1	VIPA Startup-Manager.....	23
3.4	Installation Movicon and Startup-Manager.....	26
3.5	Connection to a PLC system.....	28
3.6	Operating system Windows® Embedded CE 6.0 Core....	29
3.6.1	General	29
3.6.2	Structure.....	31
3.7	Integrated Server.....	35
3.7.1	General.....	35
3.7.2	ftp-Server.....	36
3.7.3	VNC server.....	38
3.8	Access to the network resources.....	39
4	Installation Guidelines	42
4.1	Basic rules for the EMC-equitable assembly of installa- tions.....	42
4.2	EMC-equitable assembly.....	45
4.3	EMC-equitable cabling.....	45
4.4	Special precautions providing high noise immunity.....	49
4.5	Checklist for the EMC-compliant installation of control- lers.....	50

1 General

1.1 Copyright © VIPA GmbH

All Rights Reserved

This document contains proprietary information of VIPA and is not to be disclosed or used except in accordance with applicable agreements.

This material is protected by the copyright laws. It may not be reproduced, distributed, or altered in any fashion by any entity (either internal or external to VIPA), except in accordance with applicable agreements, contracts or licensing, without the express written consent of VIPA and the business management owner of the material.

For permission to reproduce or distribute, please contact: VIPA, Gesellschaft für Visualisierung und Prozessautomatisierung mbH Ohmstraße 4, D-91074 Herzogenaurach, Germany

Tel.: +49 9132 744 -0

Fax.: +49 9132 744-1864

E-Mail: info@vipa.de

<http://www.vipa.com>



Every effort has been made to ensure that the information contained in this document was complete and accurate at the time of publishing. Nevertheless, the authors retain the right to modify the information.

This customer document describes all the hardware units and functions known at the present time. Descriptions may be included for units which are not present at the customer site. The exact scope of delivery is described in the respective purchase contract.

CE Conformity Declaration

Hereby, VIPA GmbH declares that the products and systems are in compliance with the essential requirements and other relevant provisions. Conformity is indicated by the CE marking affixed to the product.

Conformity Information

For more information regarding CE marking and Declaration of Conformity (DoC), please contact your local VIPA customer service organization.

Trademarks

VIPA, SLIO, System 100V, System 200V, System 300V, System 300S, System 400V, System 500S and Commander Compact are registered trademarks of VIPA Gesellschaft für Visualisierung und Prozessautomatisierung mbH.

SPEED7 is a registered trademark of profichip GmbH.

SIMATIC, STEP, SINEC, TIA Portal, S7-300 and S7-400 are registered trademarks of Siemens AG.

Microsoft und Windows are registered trademarks of Microsoft Inc., USA.

Portable Document Format (PDF) and Postscript are registered trademarks of Adobe Systems, Inc.

All other trademarks, logos and service or product marks specified herein are owned by their respective companies.

Information product support

Contact your local VIPA Customer Service Organization representative if you wish to report errors or questions regarding the contents of this document. If you are unable to locate a customer service centre, contact VIPA as follows:

VIPA GmbH, Ohmstraße 4, 91074 Herzogenaurach, Germany

Telefax: +49 9132 744-1204

E-Mail: documentation@vipa.de

Technical support

Contact your local VIPA Customer Service Organization representative if you encounter problems with the product or have questions regarding the product. If you are unable to locate a customer service centre, contact VIPA as follows:

VIPA GmbH, Ohmstraße 4, 91074 Herzogenaurach, Germany

Tel.: +49 9132 744-1150 (Hotline)

E-Mail: support@vipa.de

1.2 About this manual

Objective and contents

This manual describes the Touch Panel 62P-NHC0 from VIPA. It contains a description of the structure, project engineering and deployment. This manual is part of the documentation package with order number VIPA HB160E_TP-ECO and relevant for:

Product	Order number	as of state:	
		HW	BS
TP 615LC	62P-NHC0	01	Windows® CE 6.0 core

Target audience

The manual is targeted at users who have a background in automation technology.

Structure of the manual The manual consists of chapters. Every chapter provides a self-contained description of a specific topic.

Guide to the document The following guides are available in the manual:

- An overall table of contents at the beginning of the manual
- References with page numbers

Availability The manual is available in:

- printed form, on paper
- in electronic form as PDF-file (Adobe Acrobat Reader)

Icons Headings Important passages in the text are highlighted by following icons and headings:

**DANGER!**

Immediate or likely danger. Personal injury is possible.

**CAUTION!**

Damages to property is likely if these warnings are not heeded.



Supplementary information and useful tips.

1.3 Safety information

Applications conforming with specifications

The Touch Panels are constructed and produced for:

- VIPA CPUs 11x, 21x, 31x, 51x and S7-300/400 from Siemens
- communication and process control
- industrial applications
- operation within the environmental conditions specified in the technical data
- installation into a cubicle

**DANGER!**

This device is not certified for applications in
– in explosive environments (EX-zone)

Documentation

The manual must be available to all personnel in the

- project design department
- installation department

- commissioning
- operation

**CAUTION!**

The following conditions must be met before using or commissioning the components described in this manual:

- Hardware modifications to the process control system should only be carried out when the system has been disconnected from power!
- Installation and hardware modifications only by properly trained personnel.
- The national rules and regulations of the respective country must be satisfied (installation, safety, EMC ...)

Disposal

National rules and regulations apply to the disposal of the unit!

2 Hardware description

2.1 Safety Information for Users

Handling of electrostatic sensitive modules

VIPA modules make use of highly integrated components in MOS-Technology. These components are extremely sensitive to over-voltages that can occur during electrostatic discharges. The following symbol is attached to modules that can be destroyed by electrostatic discharges.



The Symbol is located on the module, the module rack or on packing material and it indicates the presence of electrostatic sensitive equipment. It is possible that electrostatic sensitive equipment is destroyed by energies and voltages that are far less than the human threshold of perception. These voltages can occur where persons do not discharge themselves before handling electrostatic sensitive modules and they can damage components thereby, causing the module to become inoperable or unusable. Modules that have been damaged by electrostatic discharges can fail after a temperature change, mechanical shock or changes in the electrical load. Only the consequent implementation of protection devices and meticulous attention to the applicable rules and regulations for handling the respective equipment can prevent failures of electrostatic sensitive modules.

Shipping of modules

Modules must be shipped in the original packing material.

Measurements and alterations on electrostatic sensitive modules

When you are conducting measurements on electrostatic sensitive modules you should take the following precautions:

- Floating instruments must be discharged before use.
- Instruments must be grounded.

Modifying electrostatic sensitive modules you should only use soldering irons with grounded tips.



CAUTION!

Personnel and instruments should be grounded when working on electrostatic sensitive modules.

2.2 Properties

General

The Touch Panel allows you to visualize and alter operating states and recent process values of a connected PLC

TP 615LC 62P-NHC0

The VIPA Touch Panel is a compact and modular embedded PC based on Windows® CE. Besides of the extensive Windows® CE functions the Touch Panel offers varied communication possibilities. Here the Touch Panel can simply be configured, controlled and remoted. By including a selectable HMI/SCADA runtime the Touch Panel is particularly suitable for monitoring and controlling of process cycles.



- Windows® CE 6.0 Core
- Movicon Basic
- Processor Cortex-A8, 1000MHz
- Flash memory 128Mbyte, SDRAM 256Mbyte
- SD card slot
- RS232, RS232/RS422/RS485, USB-A- und 2 Ethernet interfaces
- MPI/PROFIBUS DP interface (optional)
- Robust aluminium case
- display resolution 1024 x 768 / 768 x 1024
- battery backed clock
- resistive analog touch screen
- easy mounting via 10 mounting clips
- protection class IP65 (frontal)

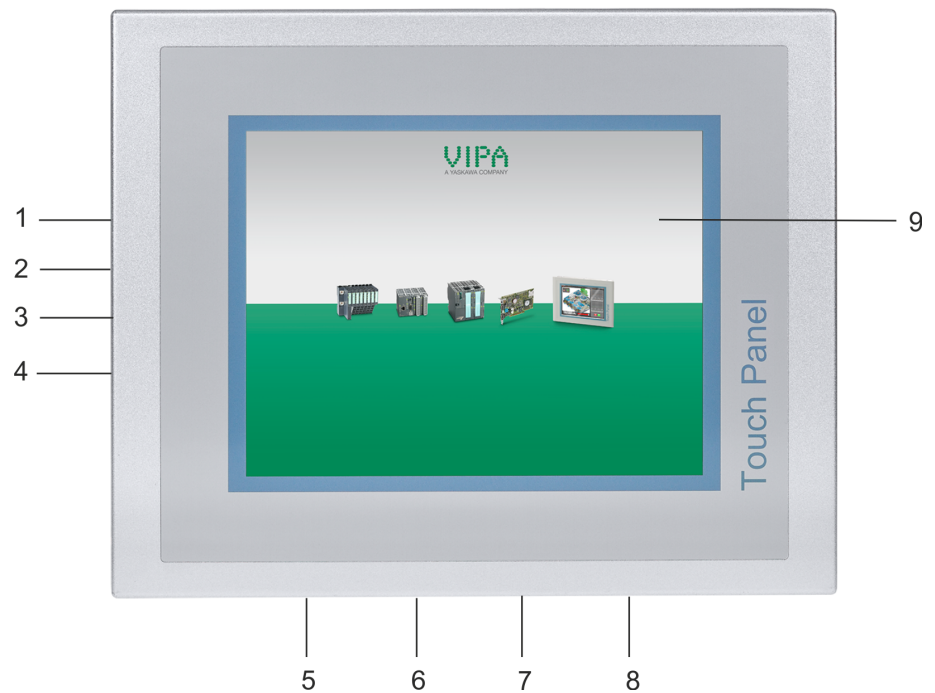
Order data

Type	Order number	Description
TP 615LC	VIPA 62P-NHC0	15" TFT color, RS232, RS232/RS422/RS485, USB-A, 2x Ethernet RJ45
MPI/PROFIBUS DP interface	VIPA 961-0MP0	MPI/PROFIBUS DP interface (optional)

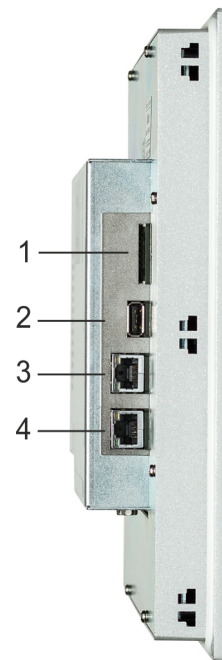
2.3 Structure

2.3.1 Overview

Front view



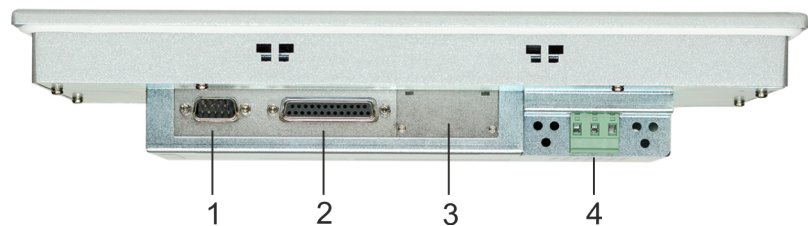
- 1 Slot for SD storage medium
- 2 "Host"-USB-A interface
- 3 RJ45 jack for Ethernet communication LAN1
- 4 RJ45 jack for Ethernet communication LAN2
- 5 RS232 interface COM 1
- 6 RS232/RS422/RS485 interface COM 2
- 7 MPI/PROFIBUS DP interface COM 3 (optional)
- 8 Slot for DC 24V voltage supply
- 9 Display with touch sensitive area (touch screen)

Side view

- 1 Slot for SD storage medium
- 2 "Host"-USB-A interface
- 3 RJ45 jack for Ethernet communication LAN1
- 4 RJ45 jack for Ethernet communication LAN2



Please note that these two Ethernet interfaces cannot be used as a Switch!

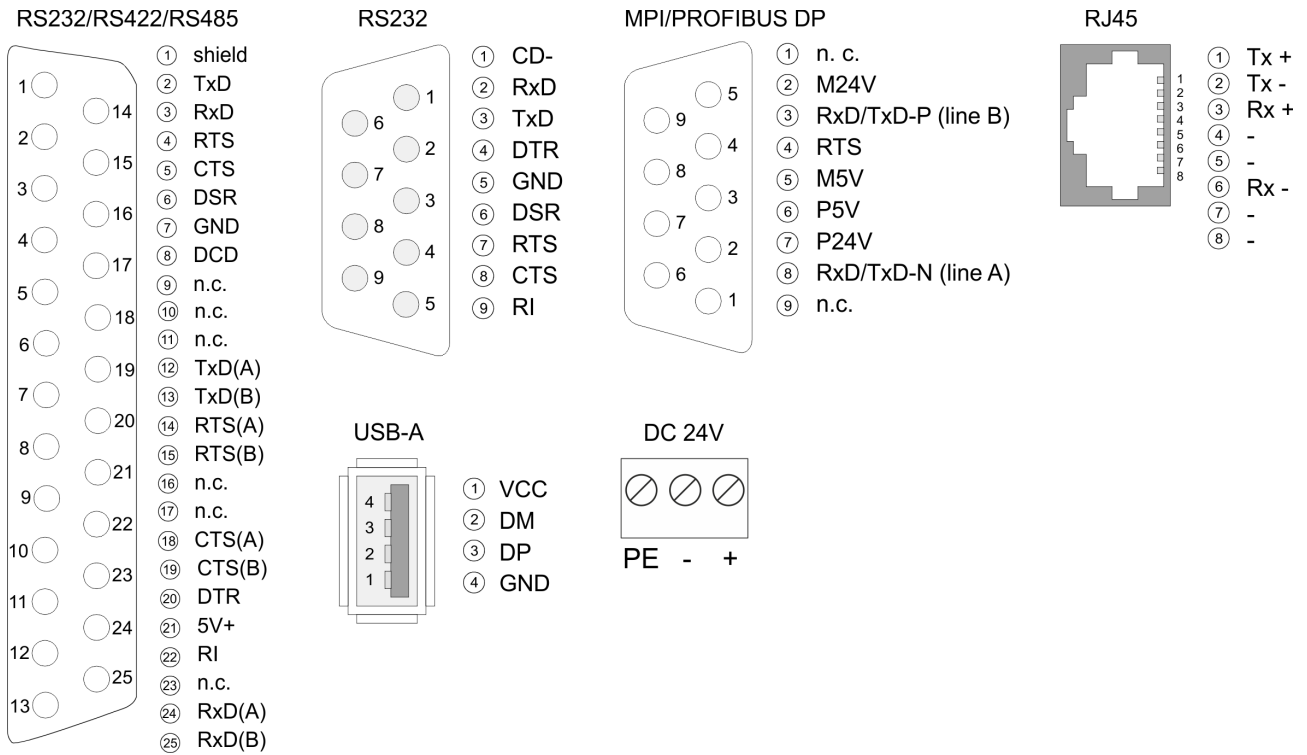
Bottom view

- 1 RS232 interface COM 1
- 2 RS232/RS422/RS485 interface COM 2
- 3 MPI/PROFIBUS DP interface COM 3 (optional)
- 4 Slot for DC 24V voltage supply



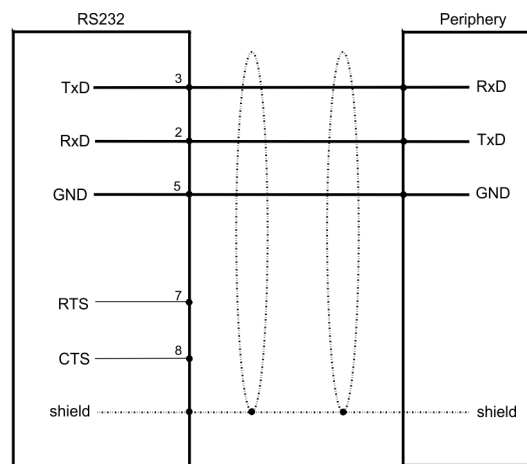
Please regard that the Touch Panel always has to be supplied with external voltage!

2.3.2 Interfaces



RS232 interface

- Interface is compatible to the COM interface of a PC
- Logical signals as voltage levels
- Point-to-point links with serial full-duplex transfer in two-wire technology up to 15m distance
- Data transfer rate up to 115.2kbit/s

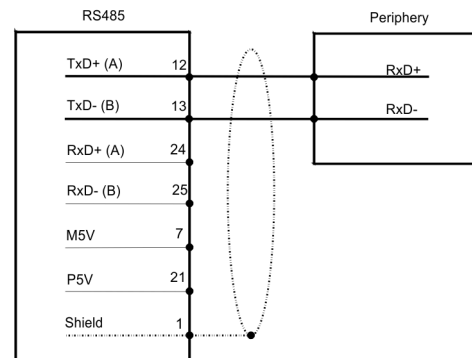
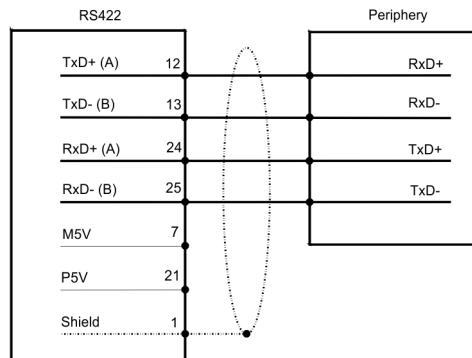
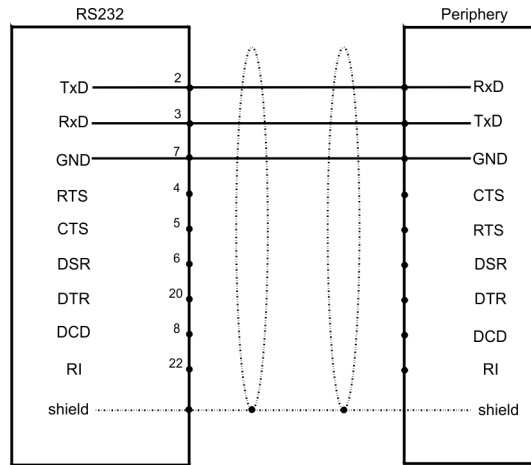


9pin plug

Pin	RS232
1	CD
2	RxD
3	TxD
4	DTR

Pin	RS232
5	GND
6	DSR
7	RTS
8	CTS
9	RI

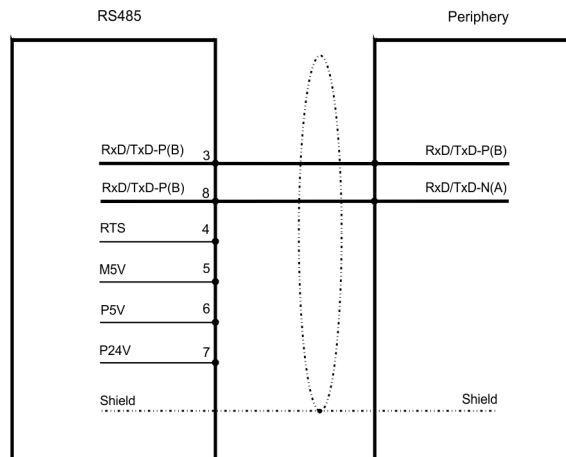
RS232/RS422/RS485 interface



25pin jack

Pin	Signal	Type
1	Shield	-
2	TxD	RS232
3	RxD	RS232
4	RTS	RS232
5	CTS	RS232
6	DSR	RS232
7	GND	5V-/RS232
8	DCD	RS232
9	n.c.	-
10	n.c.	-
11	n.c.	-
12	TxD(A)	RS422/RS485
13	TxD(B)	RS422/RS485
14	RTS(A)	RS422
15	RTS(B)	RS422
16	n.c.	-
17	n.c.	-
18	CTS(A)	RS422
19	CTS(B)	RS422
20	DTR	RS232
21	5V+	-
22	RI	RS232
23	n.c.	-
24	RxD(A)	RS422
25	RxD(B)	RS422

MPI/PROFIBUS DP interface (optional)



9pin jack

Pin	RS485
1	n.c.
2	M24V
3	RxD/TxD-P (Line B)
4	RTS
5	M5V
6	P5V
7	P24V
8	RxD/TxD-N (Line A)
9	n.c.

Ethernet connection

The two RJ45 jacks provide the interface to the twisted pair cable, required for Ethernet. The pin assignment of these jacks is as follows:

8pin RJ45 jack

Pin	Signal
1	Transmit +
2	Transmit -
3	Receive +
4	-
5	-
6	Receive -
7	-
8	-



Please note that these two Ethernet interfaces cannot be used as a Switch!

"Host"-USB-A

Using the "Host"-USB-A interface mouse, keyboard, USB stick or USB hard discs can be connected. The pin assignment is as follows:

Pin	Assignment
1	VCC
2	DM
3	DP
4	GND

Power supply

The Touch Panel has got an integrated power supply. The power supply has to be provided with DC 24V (20.4 ... 28.8V). For this you find an according DC 24V slot at the back.

The power supply is protected against inverse polarity and overcurrent.

2.3.3 Memory management**Overview**

The following memory systems are available for every Touch Panel:

- 256MByte work memory
- 128MByte Flash disk (50Mbyte for user data)
- USB storage media using "Host"-USB-A interface
- Slot for SD

Work memory

Every Touch Panel has a work memory with a size of 128Mbyte. The work memory is not buffered and is deleted after shut down. Please regard that also registry entries are stored in the work memory that are set back to default settings after the next re-boot.

Flash disk

As internal permanent storage medium every Touch Panel has a flash disk with a size of 128Mbyte (50Mbyte user data). After the start of Windows® CE this memory is listed as *Flashdisk at My Device*.

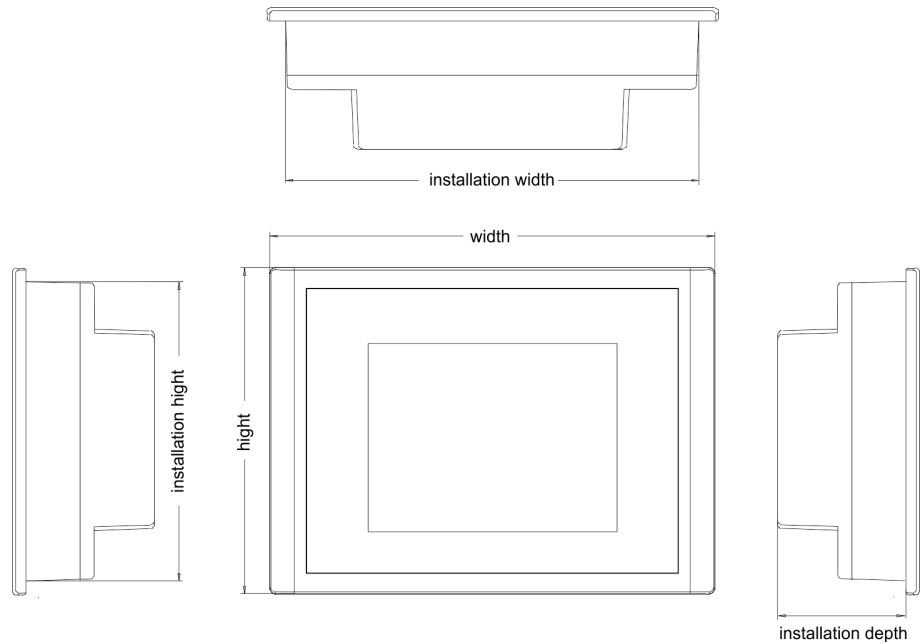
USB storage media

The connection of USB sticks and USB drives by use of the "Host"-USB-A interface is supported by the Touch Panel. After connection the storage media is listed as *Hard Disk at My Device*.

Slot for SD

At the back of the Touch Panel there are the card slots for memory cards. At this slot you may plug storage modules of the type SD. The card may be plugged and removed during runtime and is immediately listed as *SDMMC Card at My Device*.

2.4 Dimensions



Installation dimensions

For the installation of the Touch Panel in control cabinets and desks the following dimensions are necessary:

15" - 62P-NHC0

Front panel width	2.5 ... 6mm
Installation cutting (B x H)	368 x 290mm
Front panel (B x H)	400 x 310mm
Rear panel (B x H x T)	367 x 289 x 50mm
Installation depth	50mm



The degrees of protection are only guaranteed when the following is observed:

- *Material thickness at the mounting cut-out: 2.5 ... 6mm*
- *The deviation from the plane for the panel cut-out is ≤ 0.5mm*

This condition must be fulfilled for the mounted HMI device.

- *Permissible surface roughness in the area of the seal: ≤ 120µm (friction coefficient 120)*

2.5 Technical Data

Order no.	62P-NHC0
Type	Touch Panel TP 615LC
Display	
Display size (diagonal)	15"

Order no.	62P-NHC0
Display size (width)	304 mm
Display size (height)	228 mm
Resolution	768 x 1024 / 1024 x 768
Type of display	TFT color (64K colors)
MTBF Backlights (25°C)	50000 h
System properties	
Processor	Cortex-A8 1000 MHz
Operating system	Windows CE 6.0 Core
Work memory	256 MB
User memory	128 MB
Avilable memory (user data)	50 MB
SD/MMC Slot	✓
CF Card Slot Typ II	-
Time	
Real-time clock buffered	✓
Clock buffered period (min.)	26 W
Accuracy (max. deviation per day)	2 s
Operating controls	
Touchscreen	resistive
Keyboard	external via USB
Mouse	external via USB
Interfaces	
MPI, PROFIBUS-DP	optional
MPI, PROFIBUS-DP connector	-
CAN	-
CAN connector	-
Serial, COM1	RS232
COM1 connector	Sub-D, 9-pin, male
Serial, COM2	RS232 / RS422 / RS485
COM2 connector	Sub-D, 25-pin, female
Number of USB-A interfaces	1
USB-A connector	USB-A (host)
Number of USB-B interfaces	-
USB-B connector	-
Number of ethernet interfaces	2

Order no.	62P-NHC0
Ethernet	Ethernet 10/100 MBit
Ethernet connector	RJ45
Integrated ethernet switch	-
Technical data power supply	
Power supply (rated value)	DC 24 V
Power supply (permitted range)	DC 20.4...28.8 V
Reverse polarity protection	✓
Current consumption (no-load operation)	0.24 A
Current consumption (rated value)	2.46 A
Inrush current	85 A
I^2t	0.37 A ² s
Power loss	27 W
Status information, alarms, diagnostics	
Supply voltage display	none
Mechanical data	
Housing / Protection type	
Material	aluminium, galvanized steel
Mounting	mounting clips
Protect type front side	IP 65
Protect type back side	IP 20
Dimensions	
Front panel	400 x 310 x 6 mm
Rear panel	367 x 289 x 50 mm
Installation cut-out	
Width	368 mm
Height	290 mm
Minimum	2.5 mm
Maximum front panel thickness	6 mm
Weight	4900 g
Environmental conditions	
Operating temperature	0 °C to 50 °C
Storage temperature	-20 °C to 60 °C
Certifications	
UL508 certification	yes

3 Deployment Touch Panel

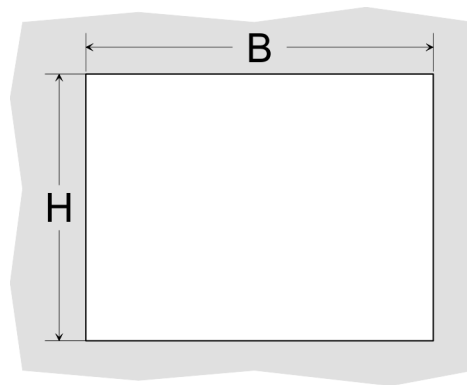
3.1 Installation

Overview

The Touch Panel is suitable for the installation in operating tables and control cabinet fronts. The installation happens via the backside. The Touch Panel is provided with a patented fixing technique that allows an easy connection with a hexagon socket key. A fast and easy device change is possible.

Installation cutting

For the installation into a operating tableau and control cabinet fronts, the Touch Panel requires the following front plate cutting:

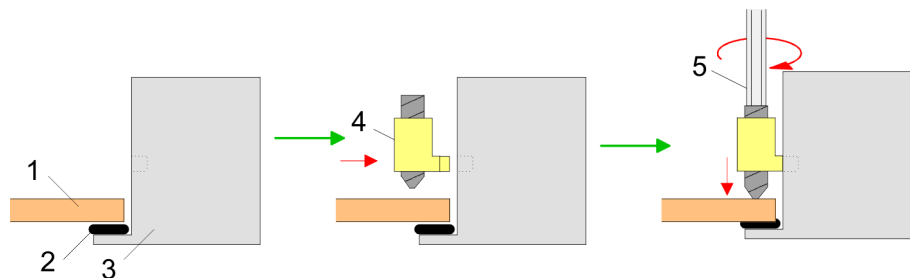


Touch Panel	W x H in mm
62P-NHC0	368 x 290

Installation

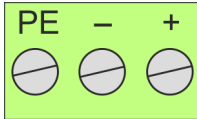
For the installation of the panel, mounting clips and a small hexagon socket key are required.

1. Push the operator panel [3] from the front side into the front panel cutting [1] until it touches the panel with the seal [2].
2. Put the mounting clips [4] on all four sides of the panel into the openings. The screws should point in the direction of the front panel.
3. Screw the screws from the other side with the hexagon socket key [5].



Connect power supply

For the cabling of the DC 24V power supply a green plug is used. The connector is a plug with screw contacts. The plug has the following assignment:



+ DC 24V
 - DC 0V
 PE Protective earth

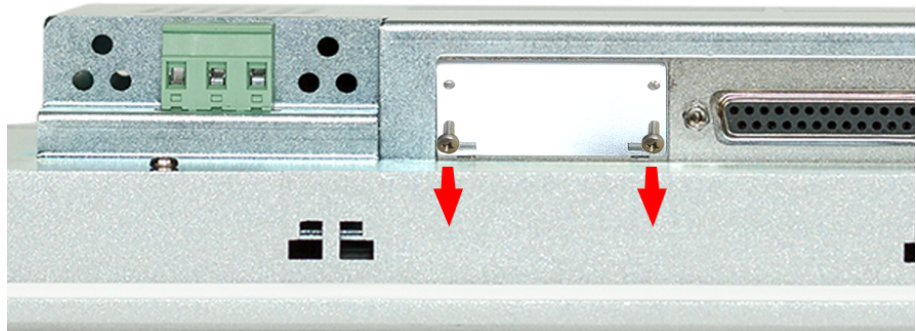
3.2 Installation of the optional MPI/PROFIBUS DP interface



CAUTION!

Personnel and instruments should be grounded when working on electrostatic sensitive modules! Take the interface module only at the holding plate and avoid touching the board! Store respectively send the interface module always in the corresponding ESD packaging!

Installation

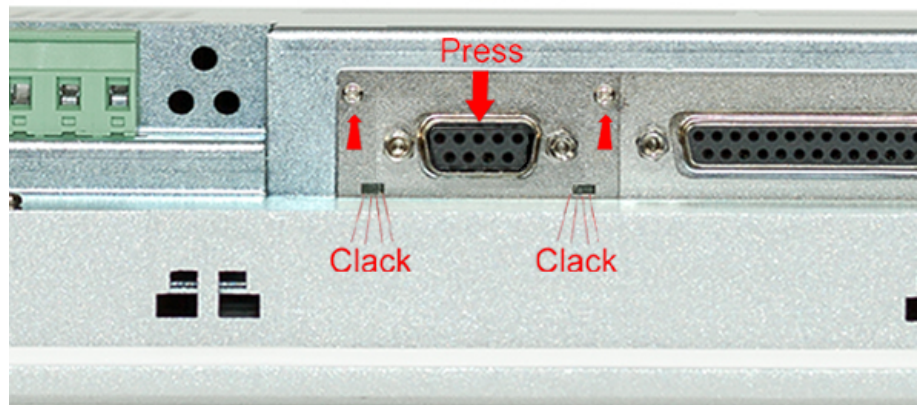


1. Remove the cover plate of the COM3 port by removing the screws and pulling the plate.



2. For installation insert the interface module into the opening. Push the interface module in the device until the holding plate fits to the housing. Here the interface module is put into the right position by 2 inner guide rails.

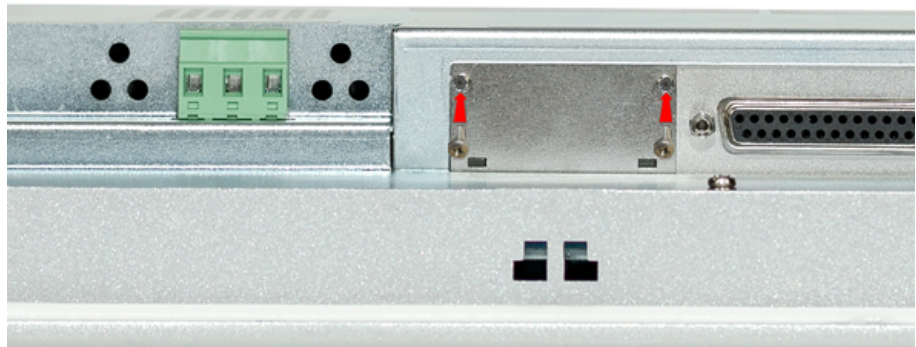
Installation of the optional MPI/PROFIBUS DP interface



3. ▶ Now press the interface module downwards until the holding plate snaps into the lugs.



Please consider that the holding plate always snaps to the lugs, otherwise the holding plate can not be screwed!



4. ▶ Mount the screws again.

After installation the interface module is automatically recognized and can be configured.

Demounting

1. ▶ Remove the screws.
2. ▶ Push the holding plate from the lugs. Use a screwdriver by inserting it gently between the housing and holding plate.
3. ▶ Pull the interface module out of the device.
4. ▶ Reinstall the cover plate.

3.3 Commissioning



CAUTION!

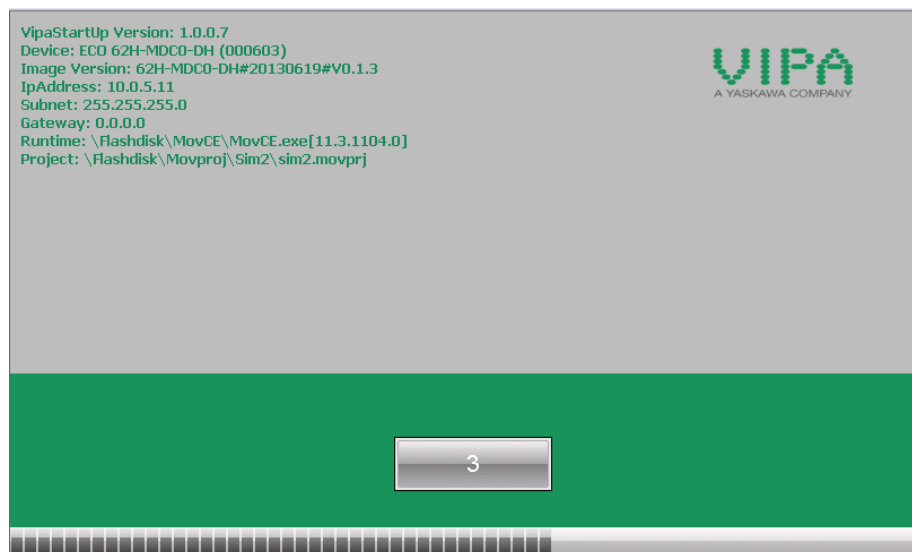
- Before commissioning the device must be brought to room temperature.
- At condensation the device must be absolutely dry before connected to power.
- To avoid overheat during operation the device must not be laid open to direct sun light.
- After opening the control cabinet or desk, there are parts with possible dangerous voltage available.
- For all signal connections only screened cables are permitted.
- Signal cables must not be let within the same cable shaft as high voltage cables.

3.3.1 VIPA Startup-Manager

As soon as the Touch Panel is provided by power supply, the *VIPA Startup-Manager* will be loaded.

Start screen

At the first startup of the *VIPA Startup-Manager* the following *start screen* appears.



There is a button on the *initial screen* with a counter, which counts backwards. If you click on this button within this time, you may return to the *selection menu*. If the time expires, the project will start automatically.

A delay time of 5 seconds is default. In the *selection menu* at "Autostart" you can adjust this time.

Selection menu

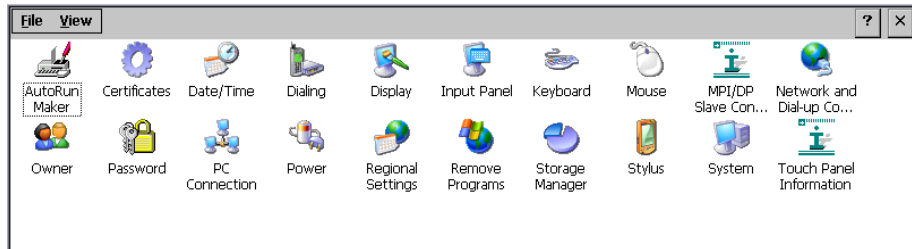
There are following buttons in the *selection menu*:

- Settings
- Info/Update
- Autostart

- Exit
- Back

Settings

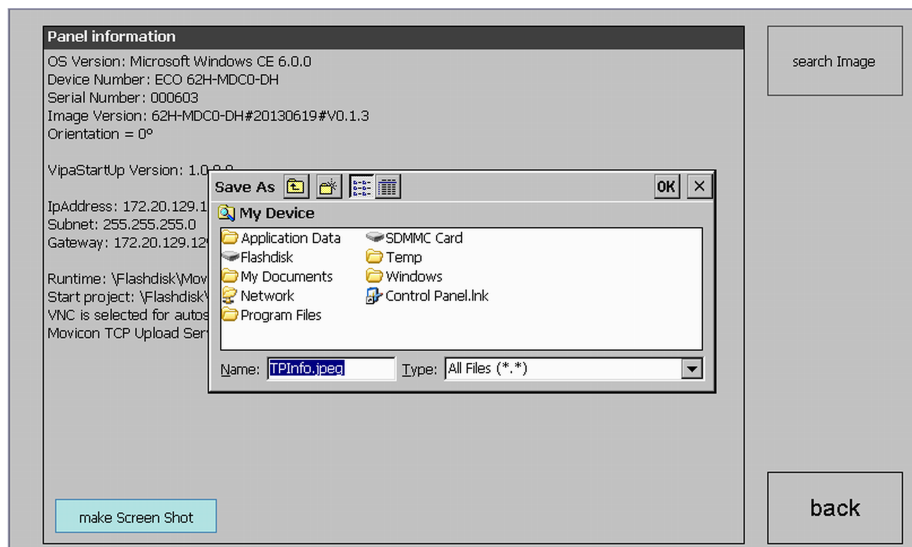
In [Settings] the system settings like brightness and contrast of the display can be preset or the display can be re-calibrated. Here the MPI/DP slave interface may also be configured. Further you get here the Touch Panel information: product number, serial number and licenses.



Info/Update (firmware)

To execute the firmware update press the button [Info/Update]. After clicking on [Info/Update] the current image is displayed under "image version" with panel name, creation date and version number.

With [Make Screen Shot] you can make a screen shot of the panel information and select a destination for its storage.



With [Search Image] a list of all the firmware images is shown, which are available on the panel and connected storage media. These images will be listed with create data and version number. Choose your new image.

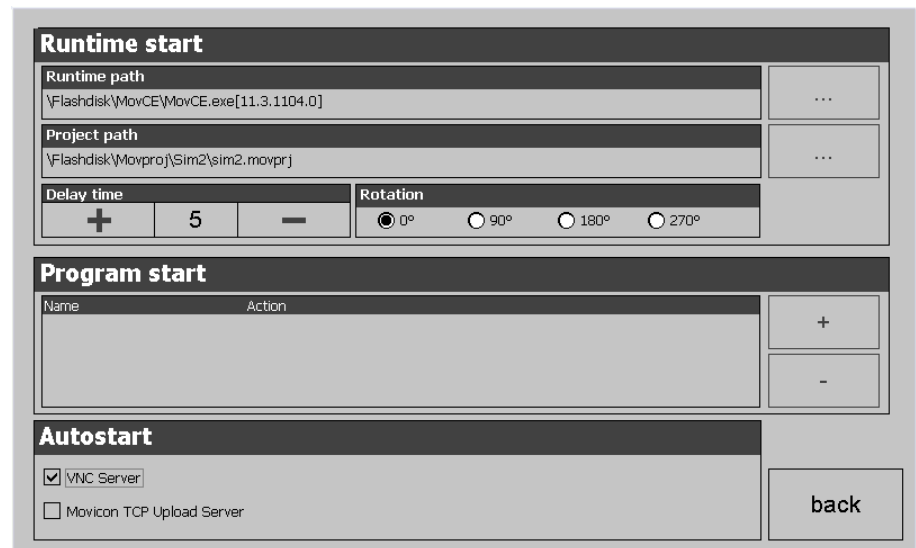
Found Image (4)	
SDMMC Card\...\62H-MDC0-DH_CE6.0-2013-03-25_V0.1.2.BIN	(V0.1.2/20130325)
SDMMC Card\...\62H-MDC0-DH_CE6.0-2013-06-19_V0.1.3.BIN	(V0.1.3/20130619)
SDMMC Card\...\62H-MDC0-DH_CE6.0-2013-07-11_V0.1.4.BIN	(V0.1.4/20130711)
SDMMC Card\...\62H-MDC0-DH_CE6.0-2013-08-29_V0.1.5.BIN	(V0.1.5/20130829)
Cancel	

If the select image is not suited for your panel, an error message appears. If the image is suited for your panel, in the following message the current installed image version and the new selected image version are listed.

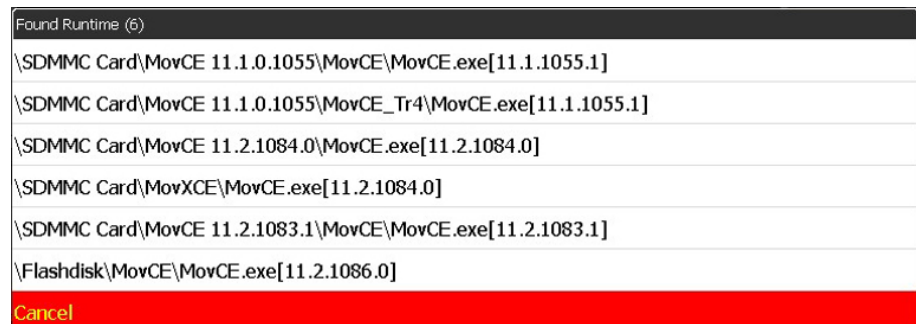
1. Click on [Make Image Update] to execute the update. This can take a few seconds.
2. In the following window click on [Finish] to end the update.
 - ⇒ Then the display gets dark.
3. Switch the power supply off the panel off and on.
 - ⇒ After the restart the calibration window is opened.
4. Re-calibrate your panel as described. After calibration tap anywhere at the screen.
 - ⇒ The calibration window is closed.
5. Via 'Start → Settings → Control Panel' start the program *AutoRunMaker*. [↪ Chapter 3.4 'Installation Movicon and Startup-Manager' on page 26](#)

Autostart

With [Autostart] you define which runtime and which project will be started automatically together with the panel startup.



With [...] at "Runtime path" res. "Project path" all existing runtimes res. projects on the panel and the storage media will be listed.



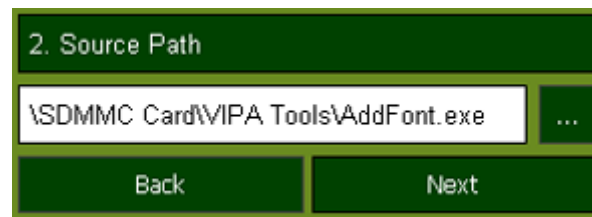
At "Delay Time" you can adjust a delay time > 0 by using the buttons [+] and [-]. 5 seconds are default.

Via "Rotation" the orientation of the panel can be changed.

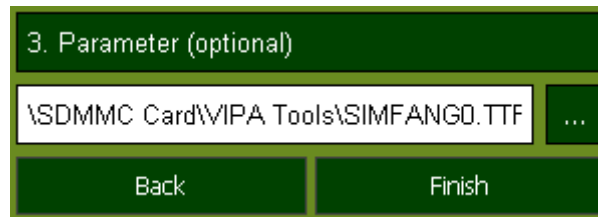
Via "Program start" with [+] you can add programs, which have to start automatically.



1. Select "start" and assign a name for the program.



2. Upload your program with [...].



3. You may optionally set parameters.

4. Exit with [Finish].

On Windows® CE, with "Copy" [...] files to be used may be copied on the panel from a source path to a destination path.

With "Autostart" you may select the automatic startup of the VNC Viewer and the Movicon-TCP upload server. With [back] you may return to the *select menu*.

Exit

The VIPA Startup-Manager will be closed by [Exit] and the system returns to the Windows® screen.

Back

With [Back] you get back to the start screen of the *VIPA Startup-Manager*.

3.4 Installation Movicon and Startup-Manager

Overview

After an image update it is necessary to re-install Movicon and Startup-Manager. The current data can be found in the service area of www.vipa.com.

For the panel 62P-NHC0 the directory *VIPA* and the file *AutoRun-Maker.cfg* is necessary of the following zip file:

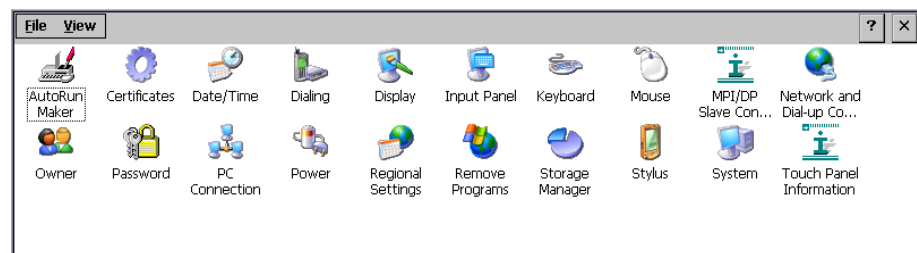
■ **62P-NHC0_DH_install_SD_Card_V0.1.0.zip**




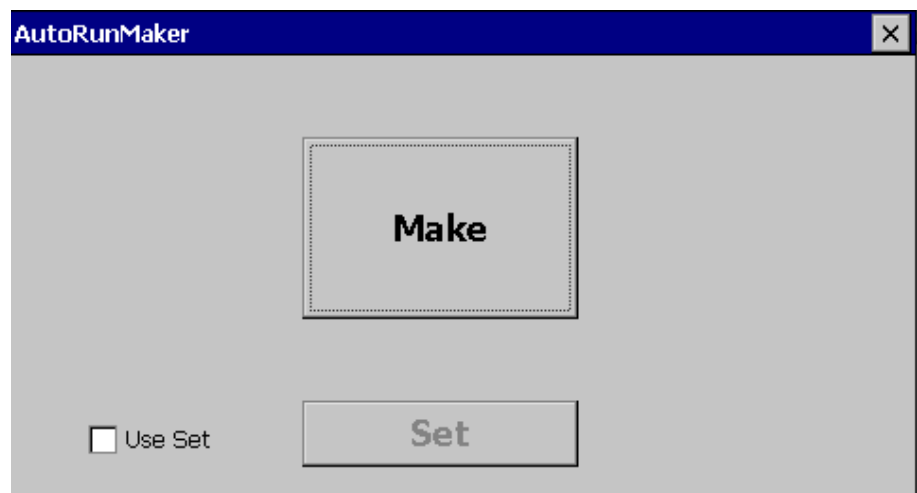
Before the installation can be established, you have to stop all the running programs. This also applies to programs, which are running in the background, such as the transport service of Movicon (CEUploadServer.exe).

Proceeding

1. Call www.vipa.com
2. Click at 'Service Support → Downloads → Firmware'.
3. Via 'HMI → TP → ECO Panels' navigate to your ECO-Panel and download the zip file to your PC.
4. Unzip the zip file and copy the file to the root directory of your SD card.
5. Switch-on the panel, install the SD card and select via 'Start → Settings' Control Panel .



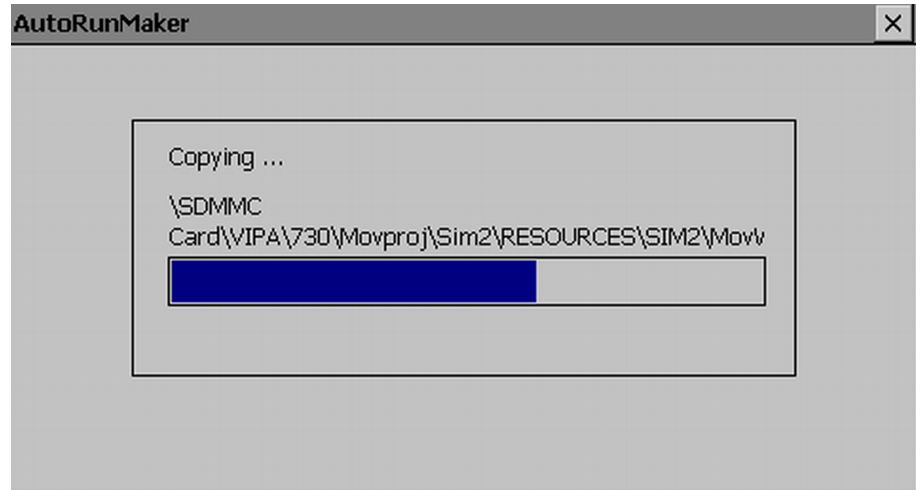
6. Start in the *Control Panel* the program "AutoRunMaker" via double-click at the following symbol  .
 ⇒ After start-up the following window appears.



7. Click at [Make].

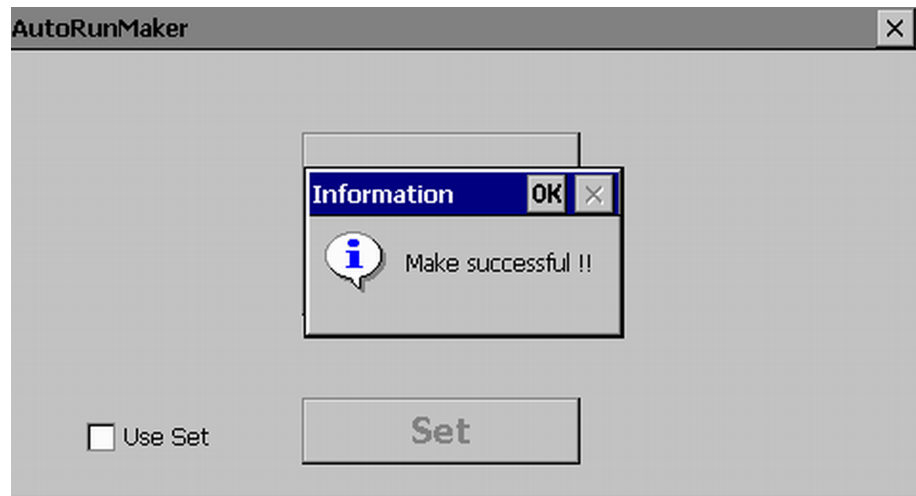
⇒ All the necessary files are copied and the registry is accordingly adjusted.

The progress is displayed in a new window.



8. Please wait a moment.

⇒ After successful execution the following completion screen appears.



9. Confirm this window with [OK], remove the SD card and re-start the panel.

⇒ The panel should start with the Startup-Manager after the restart.

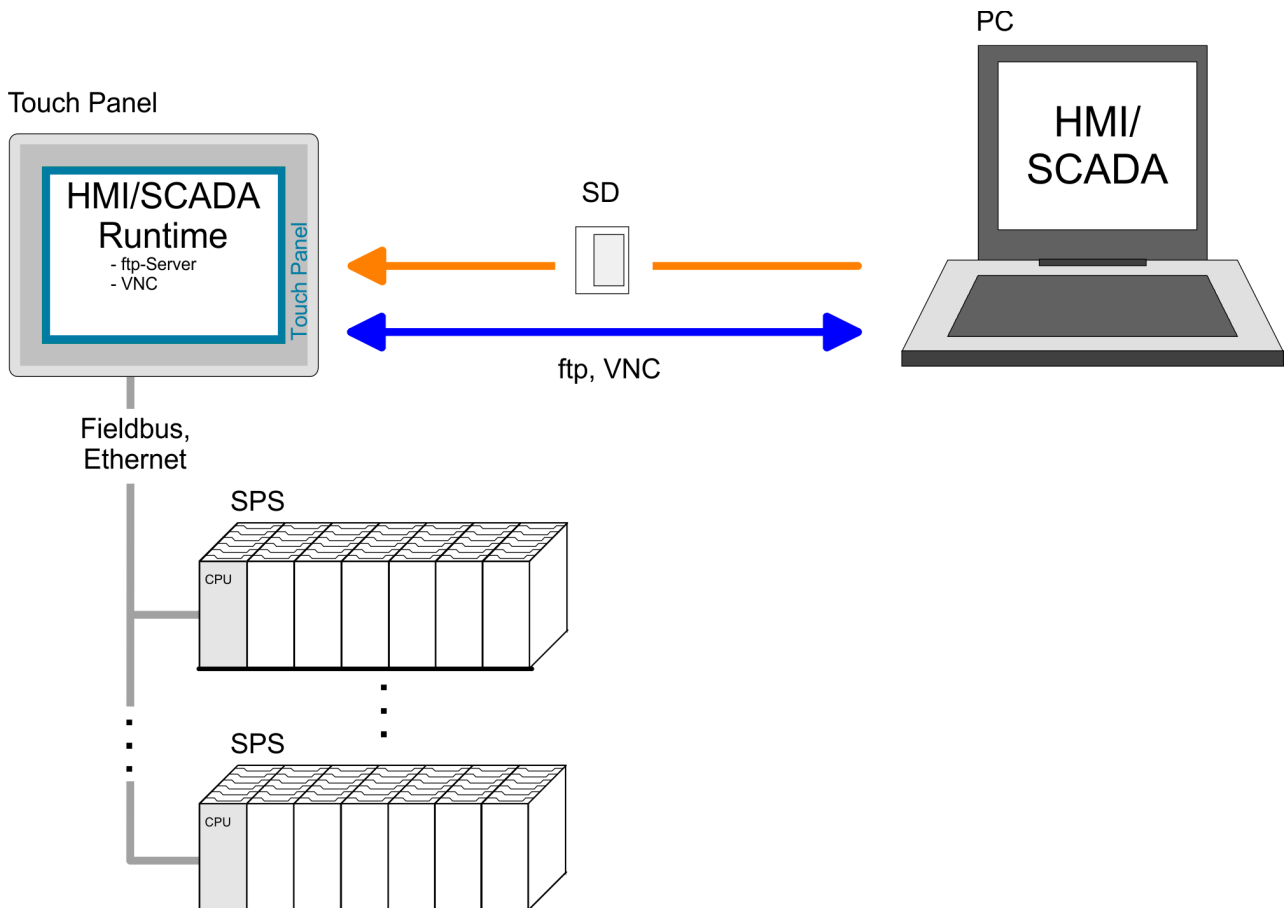
3.5 Connection to a PLC system

Overview

For the inclusion into your PLC system several HMI/SCADA project-engineering platforms are at your disposal that has to be installed at an external PC. Here you may create your project, where appropriate simulate it and transfer it to the Touch Panel via a connection that you've entered before. Via the at the Touch Panel pre-installed runtime version of the HMI/SCADA project engineering platforms your project is run able.

By using the according communication driver, the Touch Panel supports connecting options to the PLC via field bus and Ethernet.

During operation your operating device communicates with the according PLC and reacts to the application courses in the PLC according to the configured processes. Via dialogues configured before, process values may be monitored graphically, altered and evaluated.



3.6 Operating system Windows® Embedded CE 6.0 Core

3.6.1 General

The newly developed standard Windows® CE allows devices that are communicating with each other to exchange information with Windows® based devices and to establish connections to the Internet.

Microsoft Windows® CE is a 32bit, open and scalable platform for a multiplicity of communication and data processing devices. The functions like multi-tasking and multi-threading are supported by this operating system.

Windows® Embedded CE 6.0 Core

Windows® CE 6.0 Core is a Windows® operating system reduced to the absolute essentials with mouse operation (touch screen) that requires only small hardware resources.

Properties

- ftp and VNC server
- Registry Editor

- USB keyboard driver
- VIPA Startup Manager

Differences to the standard Windows® operation

Please regard that for the deployment of Windows® CEa thorough knowledge of operating Windows® are assumed. Here are only shown the differences to a "standard" Windows® operating system.

Pen entry

You're operating the Touch Panel by means of a pencil res. with the finger. When touching an area at the touch screen this area is recognized and the program reacts accordingly. The following types of entry are differentiated:

Double click

A double click has to be executed like mouse operation by touching the area at the screen twice. A double click on an object opens res. executes this.

Drag

By tapping on an object and then dragging you may move the object on the screen. If no object is selected, a frame is created by the dragging that selects the touched objects.

Navigation within the dialog window

The windows may be moved via the head bar. Here you may also find the [OK] button to confirm entries and the [X] button for exiting the dialog.

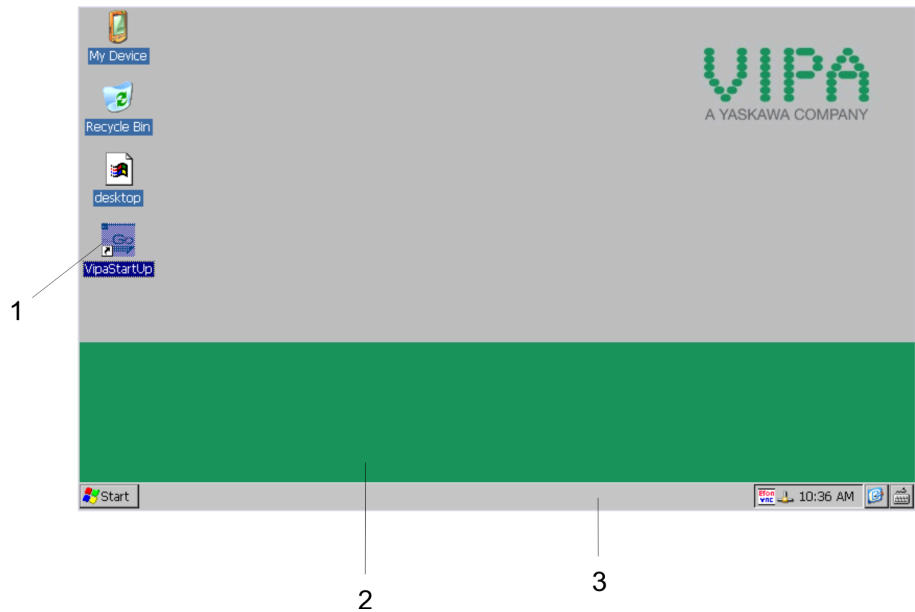
Exit Windows® (shut down)

You may not exit Windows®. By switching the power supply off and on again you may restart Windows®. Before a reboot you should always save your data res. close all running applications to avoid data loss.



Please consider that changes are stored automatically after 30 seconds. For manual storage, please use the "suspend" function. This may be found in the start menu.

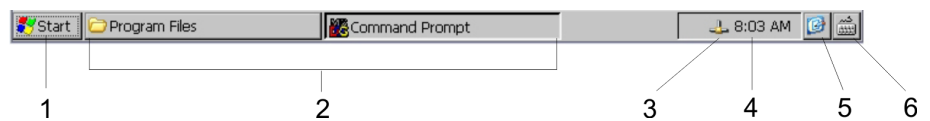
3.6.2 Structure



1	<i>Icon</i>	Via icons on the desktop you gain direct access to the application related to the icon.
2	<i>Desktop</i>	The desktop is the screen that is shown after login at Windows® CE. It contains e.g. links to the mostly used applications res. system components.
3	<i>Task bar</i>	The task bar is part of the desktop. When opening an application, a document or a window, every running object is displayed as button on the task bar. Via this buttons you may easily change between the open windows.


Taskbar

Basically the taskbar has the following structure:



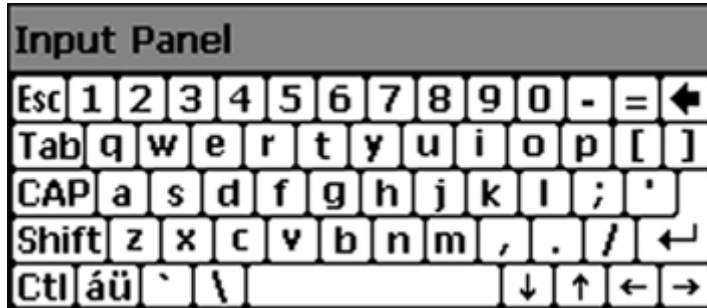
1	<i>Start button</i>	This button offers you access to all components of your Touch Panel like e.g. applications, system settings, file browser etc.
2	<i>Open applications</i>	For every open application a button is to be found in the task bar. There is no button for minimizing. The switch between the applications is performed via this buttons.
3	<i>Network connection</i>	As soon as your Touch Panel is connected via Ethernet you can see here the Ethernet address. If there is no connection via Ethernet, the symbol is displayed crossed out.
4	<i>Time</i>	This area shows the time that you may change via double click.
5	<i>Show desktop</i>	All windows are minimized and the desktop is shown.
6	<i>Software keyboard</i>	This button displays a keyboard at the screen. "Hide Input Panel" hides the keyboard again.

Software keyboard

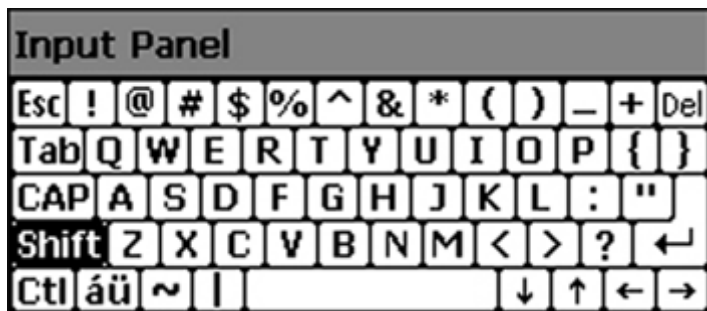
The button  allows you to select one of the available software keyboards. At the moment the following standard keyboards are implemented:

Keyboard

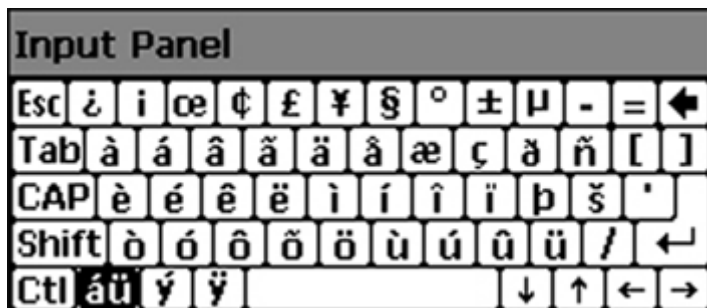
Normal:



At pushed SHIFT key:



At pushed [a´ü] key:



Please regard that the umlauts äöü may exclusively entered via the software keyboard Keyboard.

Large KB

Normal:

Input Panel															
Esc	F1	F2	F3	F4	F5	F6	F7	F8	F9	F10	F11	F12	Home	End	Prop
`	1	2	3	4	5	6	7	8	9	0	-	=	BS		
Tab	q	w	e	r	t	y	u	i	o	p	[]	\		
Caps Lock	a	s	d	f	g	h	j	k	l	;	'	return			
Shift	z	x	c	v	b	n	m	,	.	/	up			pgup	
Ctrl	win	Alt						ins	del	lt	dn	rt	pgdn		

At pushed SHIFT key:

Input Panel															
Esc	F1	F2	F3	F4	F5	F6	F7	F8	F9	F10	F11	F12	Home	End	Prop
~	!	@	#	\$	%	^	&	*	()	_	+	BS		
Tab	Q	W	E	R	T	Y	U	I	O	P	{	}			
Caps Lock	A	S	D	F	G	H	J	K	L	:	"	return			
Shift	Z	X	C	V	B	N	M	<	>	?	up			pgup	
Ctrl	win	Alt						ins	del	lt	dn	rt	pgdn		

Meaning

- Home** Position 1
- End** End
- BS** Backspace
- up**
- dn** ↓
- lt** ←
- rt** →
- pgup** Page
- pgdn** Page ↓
- ins** Insert
- del** Delete
- Tab** Tabulator
- Shift**
- Caps/Lock**

Hide keyboard

The software keyboard allows you to enter key entries without connecting an external keyboard. As soon as an entry is required the software keyboard is automatically shown. *Hide Input Panel* hides the keyboard again.

System setting (Control Panel)

Due to the fact that many components of the *Control Panel* are conform with the *system control* of Windows®, most of the description is here dispensed. The description of the control panel components relevant for operating the Touch Panel is to be found in the following:

Set display

Via 'Start → Settings → Control Panel → Display' the dialog windows for the display properties opens. Here you may change the settings for the monitor options. For example you may adjust the brightness and contrast via the register *Settings*.

Calibrate touch screen

If your touch screen does not always react on a double click or recognizes the position of an entry not precisely, you may call the dialog *Stylus* via 'Start → Settings → Control Panel'. In the register *Double-Tap* you may use the grid pattern to preset a double click velocity and test this on the symbol below. OK takes over the set value. The calibration of the touch screens happens via the register *Calibration* by following the instructions.

Set Ethernet parameters

The dialog field for pre-setting an Ethernet address is to be found at 'Start → Settings → Network and Dial-up Connections'. The default setting is address assignment via DHCP.



Please consider with the manual assignment of IP addresses that these are not identical for both interfaces. If you accidentally have assigned to the same IP address to both interfaces, then only one interface icon is shown at 'Network and Dial-up Connections'. By switching to DHCP, you receive 2 Interface icons again and can configure them individually.

System properties (System)

Here you receive information about the version of the current Windows® operating system, the memory load and sharing (alterations here are not taken over into the registry) and about the copyright. The register Device Name allows you to change the *device name* that is e.g. shown during Ethernet communication.

Set the break time of the back-lighting

Via 'Start → Settings → Control Panel → Power Properties' you may set the break time of the back-lighting. For this choose AC Power at "Power Scheme" and then set the appropriate time at "Switch state to System Idle".

Configuration MPI/DP slave

To configure the MPI/DP interface on the Touch Panel start via 'Start → Settings → Control Panel' or via "Settings" in the VIPA Startup-Manager the tool "MPI/DP slave Configuration".

Default: MPI - Address 1

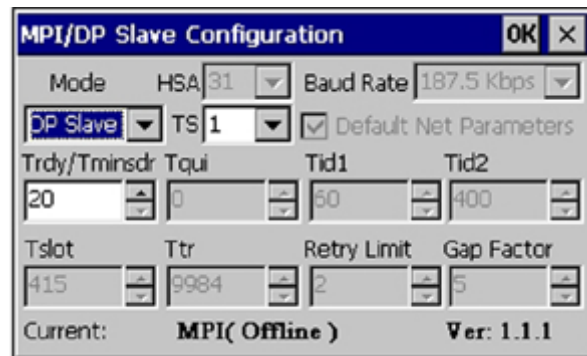
The following settings are only required if not communicate via Movicon.



Via mode the interface could be set up on "DP slave".



It is possible to set up the DP slave with the tool via software, but the hardware of the Touch Panel doesn't support this. In this case MPI does not work either.



3.7 Integrated Server

3.7.1 General

Login data

The Touch Panel has several integrated server that enable a remote maintenance within a network. Some servers only allow access by means of entering *User name* and *Password*. The following login data are used standardly:

User name: **wince**

Password: **vipatp**

Overview

Per default the following server are integrated:

- ftp server (activated)
- VNC (not activated)

Phrases

Phrases that are used in the description of the server:

Client

A client is an application that uses the service of a server within a network. For example, a web browser is a client because at every call of a website it sends a request to a web server and receives an answer.

Server	A server is an application that waits for the contact request of a client application and exchanges messages with it after contact start. This communication type is called Client-Server communication.
Host	Computer within a network where at least one server is running.
Download	Data transfer Server → Client
Upload	Data transfer Client → Server

3.7.2 ftp-Server

By means of a ftp server data between client and server can be exchanged. Here you may copy, delete or create files and directories. Because now a ftp client (Internet Explorer) is integrated in Windows®, this is the easiest method for remote maintenance of the Touch Panel.

Conditions for ftp access

Depending on the ftp client your PC must have the following conditions for a ftp connection. If there are still problems with the ftp access please ask your system administrator.

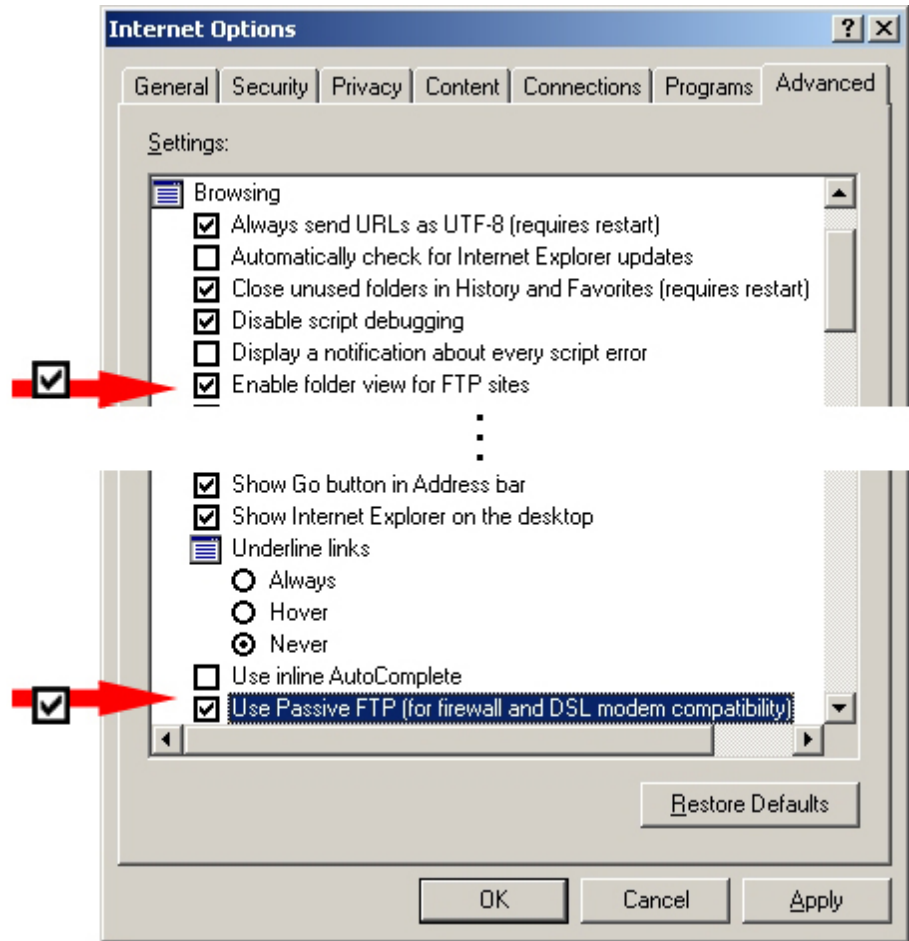
Internet Explorer

- ftp access possible with version 5.5 or higher
- use passive ftp mode
- activate directory view for ftp sites

For the adjustment choose in the Internet Explorer '*Options* → *Internet options*', register "extended" in the area "Browsing" and set the following settings:


- activate: "activate directory view for ftp sites"
- activate: "use passive ftp..."

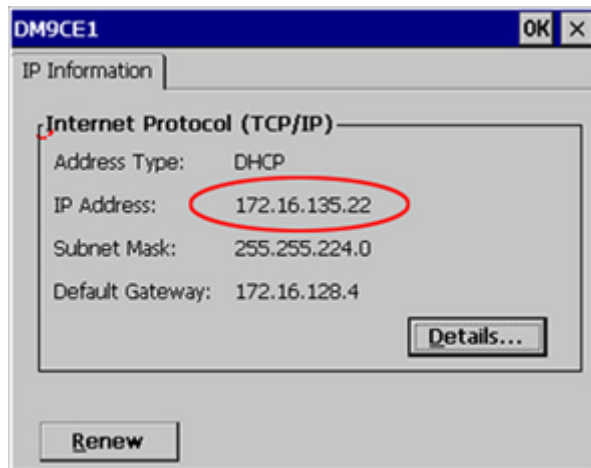
The settings are saved when re-starting the Internet Explorer.



Establishing a ftp connection

Below is explained, how to establish of a ftp connection between a Windows® based PC (here Windows® 2000) with Internet Explorer as ftp client and your Touch Panel.

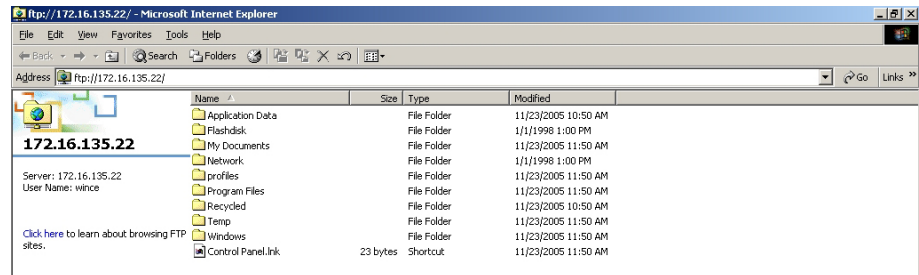
1. ➤ Connect your Touch Panel with the network where your PC is a member via an Ethernet cable.
2. ➤ Switch on your Touch Panel.
3. ➤ As soon as your Touch Panel is connected via Ethernet, you may monitor the IP address data via  in the taskbar.



4. ▶ After you've confirmed the pre-settings, start your ftp client and enter the following text into the "address bar":

```
ftp://wince:vipatp@IP-Adresse
```

⇒ The following window appears:



Here you may execute the requested file operations.

3.7.3 VNC server

The Touch Panel has an integrated VNC server (virtual network control) that allows the total control of the Touch Panel with a PC via network. For this, a window displays the current Touch Panel content for remote control. Operation is performed via PC keyboard and mouse. Condition for the VNC communication is, that the VNC server is started on the Touch Panel and a VNC client on the PC. You may download a VNC client as freeware from internet.




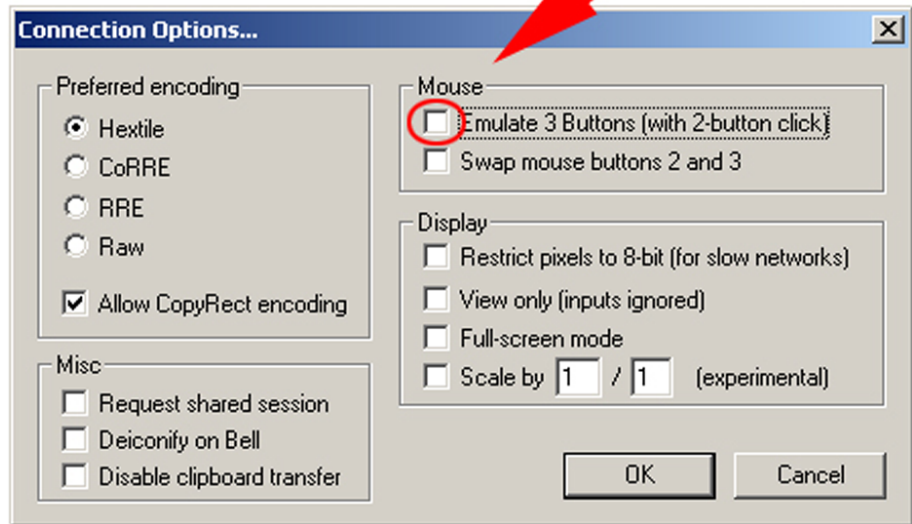
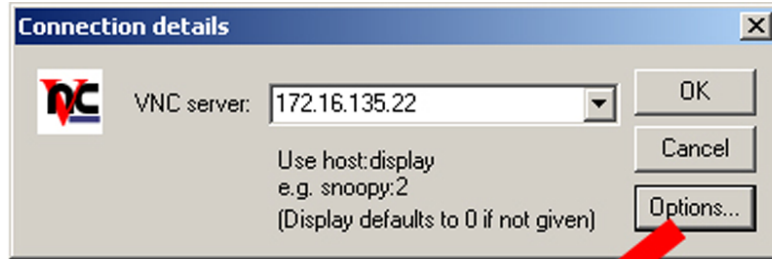
Because you can deactivate all safety attitudes with the VNC server, you should use these exclusively for start-up! Per default the VNC server is on delivery deactivated.

Due to software reasons VIPA does not support the VNC server function!

Establishing a VNC connection

The VNC connection establishment has the following approach:

1. ▶ Click on  and open the "Windows" directory.
2. ▶ Start the VNC server by executing the file `winvnc.exe`. To show the server has been started, the symbol `Efon vnc` appears in the task bar. You may also start the VNC server at the Touch Panel via a Telnet connection by entering the command `winvnc` in the command console with an active Telnet connection.
3. ▶ Now start the VNC client `vncviewer.exe` on your PC.



4. Click on [Options] and deactivate the field "Emulate 3 Buttons..." like shown at *Mouse*.
5. Enter the IP address of the Touch Panel at *VNC server*. Click on [OK] and enter the password *vipatp*. You can change the password over the configuration file, for this execute *vnconfig.exe*. Now a VNC connection is established and the screen content of the Touch Panel is monitored within a window.

Closing the VNC window terminates the VNC connection, the server keeps running.

3.8 Access to the network resources

Overview

The Touch Panel allows you to access shared resources in a Microsoft network like drives and printer. Here you may assign existing public directories or printer in the network to local directories or printer in the Touch Panel.

Condition for this is that you are logged in to the network with your user name and password. The assignment of a network resource is performed in the Touch Panel via the command console "Command Prompt". Start the command console with 'START → Programs → Command Prompt'.

The access to the network resource is performed with the commands *Net view* and *Net use*.

List released resources

Shared resources of a network PC can be listed by the command: `\> net view PC-Name`

For example `net view testserver` lists all shared resources of the network PC "test server". To test the physical connection a PING to the IP address of the network PC may be executed if there are problems while contacting the network PC.

```
\> net view testserver
Shared resources on \\testserver:

Share name      Type      Used as      Comment
-----
Archiv          Disc      (null)       Process data
KyoEDV          Print     (null)       Kyocera FS-680 Printer
Command completed successfully
\>
```

Connect net drive

The connection of a local name at the Touch Panel with a shared drive of the network PC happens with the following approach:

1. ▶ Enter the following in the command prompt: `\> net use local_name \\network drive /user:User name`
2. ▶ Enter *user name, password* and where app. *user group*.

After successful login the following message appears: *'Successfully mapped to network name'*.

The connected network drive is then available on the Touch Panel with the local name via *My Device at Network*.

Example:

Local_Name: data, network drive: testserver\archive, User-name:guest

Input: `\> net use data \\testserver\archiv /user:guest` The connected network drive is then available via `\network\data` at the Touch Panel.

Configure network printer

The configuration of a network printer happens with the following approach:

1. ▶ Enter this command into the command prompt: `\> net use printer name network printer`

Example:

Printer name: Printer, network printer: `\\testserver\printer`

Entry: `\> net use printer \\testserver\printer`

2. ▶ Enter *user name, password* and if necessary *user group*.

After the successful login the following message appears

Successfully mapped to network printer

The printer may now be accessed as "network\printer".

Test print

For example you may print the content of the current directory using `\> dir > network\printer`.

List network connections

The listing command for all network connections of your Touch Panel is `\> net use`

```
\> net use
Connected resources:

Status          Local Name          Remote Name
-----
Connected       data                \\testserver\archiv
Connected       printer            \\testserver\printer
Command completed successfully
\>
```

Terminate network connections

You may terminate already assigned network resources via

```
\> net use local_name /d
```

Example: `\> net use data /d` deletes the network connection to the drive "archive" of "test server".

4 Installation Guidelines

4.1 Basic rules for the EMC-equitable assembly of installations

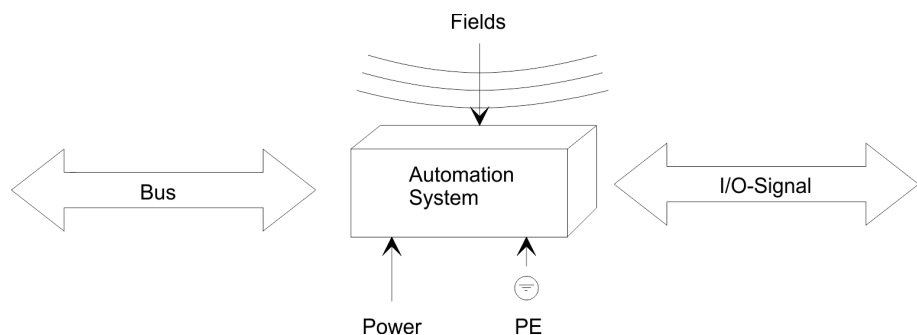
EMC

The term electromagnetic compatibility (EMC) refers to the ability of an electrical device to operate properly in an electromagnetic environment without interference from the environment or without the device causing illegal interference to the environment.

The Operation Panels are developed for applications in harsh industrial environments and complies with EMC requirements to a large degree. In spite of this you should implement an EMC strategy before installing any components, which should include any possible source of interference.

Possible sources for disturbances

Electromagnetic interference can enter your system in many different ways:



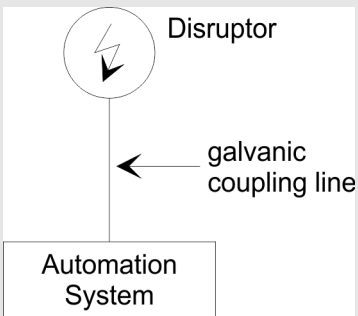
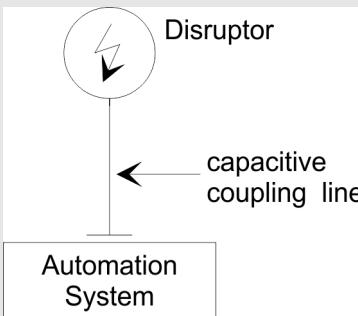
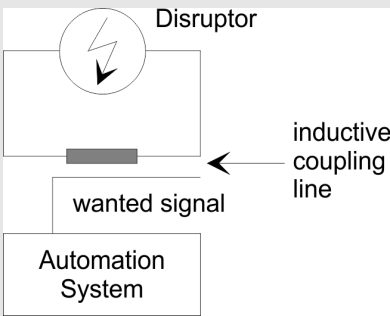
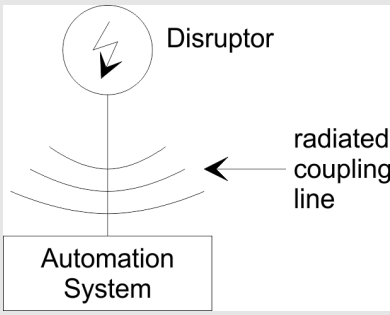
Interference is coupled into your system in different ways, depending in the propagation medium (conducted or not conducted) and the distance to the interference source.

We differentiate between:

- galvanic coupling
- capacitate coupling
- inductive coupling
- radiated power coupling

Coupling mechanisms and interference sources

The following table shows the four different coupling mechanisms, their causes and possible interference sources.

Coupling mechanism	Cause	Typical source
<p>Galvanic coupling</p> 	Galvanic or metallic coupling always occurs, when two current circuits have a common line.	<ul style="list-style-type: none"> ■ Pulsed devices (Net influence from transducers and foreign net devices) ■ Starting motors ■ Different potential of component cubicles with common current supply ■ Static discharges
<p>Capacitate coupling</p> 	Capacitate or electric coupling occurs between conductors with different potential. The coupling is proportionate to the temporal change of the voltage.	<ul style="list-style-type: none"> ■ Interference through parallel signal lines ■ Static discharge of the personnel ■ Contactors
<p>Inductive coupling</p> 	Inductive or magnetic coupling occurs between two current active line loops. The magnetic flows associated with the currents induct interference voltages. The coupling is proportional to the time related change of the current.	<ul style="list-style-type: none"> ■ Transducers, motors, electric welding devices ■ Parallel net cables ■ Cables with toggled currents ■ Signal cable with high frequency ■ Unused coils
<p>Radiate power coupling</p> 	One talks of radiate power coupling, when an electromagnetic wave meets a line circuit. The hit of the wave inducts currents and voltages.	<ul style="list-style-type: none"> ■ Sender in the neighbourhood (e.g. walkie-talkie) ■ Sparking lines(sparking plugs, collector of electric motors, welding devices)

Basic rules for ensuring EMC

In many cases, the adherence to some very elementary rules is sufficient to ensure EMC. For this reason we wish to advise you to heed the following rules:

During the installation of your automation units you should ensure that any inactive metal components are grounded via a proper large-surface earth!

- Interconnect any inactive metal components via low-impedance conductors with a large cross-sectional area.
- Execute screw connections at coated and anodized metal parts either with special contact washer or remove the isolating protective film.
- Install a central connection between the chassis ground and the earthing/protection system.

Ensure that cabling is routed properly during installation!

- Divide the cabling into different cable groups (High voltage lines, power supply lines, signal lines, data lines).
- Always install high voltage lines and signal or data lines in separate channels or bundles.
- Install signal and data lines as close as possible to any metallic ground surfaces (e.g. frames, metal rails, sheet metal).

Ensure that the screening of lines is grounded properly!

- Data lines must be screened. The screen has to be laid both-sided.
- Analog lines must be screened. Where low-amplitude signals are transferred it may be advisable to connect the screen on one side of the cable only.
- Attach the screening of cables to the ground rail by means of large-surface connectors located as close as possible to the point of entry. Fix the cables mechanically by means of cable clamps. Route the connected screen to the modules without interruptions, but don't connect the screen again.
- Ensure that the ground rail has a low-impedance connection to the cabinet/cubicle.
- Use only metallic or metallic covers for the plugs of screened data lines.

In critical cases you should implement special EMC measures!

- Connect snubber networks to all inductive loads that are not controlled by special EMC modules.
- Use incandescent lamps for illumination purposes inside cabinets or cubicles, do not use of fluorescent lamps.

Create a single reference potential and ensure that all electrical equipment is grounded wherever possible!

- Ensure that grounding measures are implemented effectively. The controllers are grounded to provide protection and for functional reasons.
- Provide a star-shaped connection between the plant, cabinets/ cubicles and the grounding/ protection system. In this way you can avoid ground loops.
- Where potential differences exist, you must install sufficiently large equipotent bonding conductors between the different parts of the plant.

4.2 EMC-equitable assembly

Mostly, measures for suppressing interference voltages are only taken, when the control is already in commission and the perfect receive of a wanted signal is disturbed. Causes for such interference's are in the most cases inadequate reference potentials, coming from mistakes at the device assembly and installation.

Guidelines for assembling and grounding of inactive metal parts

When assembling the devices, you have to ensure the large-surface grounding of the inactive metal parts. A correctly done grounding supports an unambiguous reference potential for the control and reduces the impact of coupled interferences.

Grounding means the conducting connection of all inactive metal parts. The sum of all interconnected inactive parts is called ground.

Inactive parts are all conductive parts electrically separated from all active parts by means of a basic isolation and that may only get voltage in case of an error.

The ground must not adopt dangerous contact voltage even in case of an error. Thus you have to connect the ground with the protected earth conductor. To avoid ground loops, local distant ground constructions (cubicles, construction and machine parts) have to be connected with the protected earth conductor system in star-topology.

Please regard at grounding:

- Connect the inactive metal parts as carefully as the active ones.
- Take care of impedance-low metal-metal-connections, e.g. with large-surface and well conductive contacts.
- If you include coated or anodized metal parts in the grounding, you have to come through the isolating protection layers. For this you may use special contact washers or remove the isolation layer.
- Protect the connection points from corrosion, e.g. with grease.
- Moveable grounding parts (e.g. cubicle doors) have to be connected via flexible ground strips. The ground strips should be short and have a large surface, because the surface is decisive for the diversion of high frequency interferences.

4.3 EMC-equitable cabling

Line routing

Content of this section is the line routing of bus, signal and supply lines. Object of the line routing is to suppress the "slurring" at parallel lines.

EMC-equitable cabling

Line routing inside and outside of cubicles

For an EMC-equitable routing of the lines it is convenient to divide the cables in different groups and install each group itself:

Group A

- screened bus and data lines
- screened analog lines
- unshielded lines for direct voltage $\leq 60V$
- unshielded lines for alternating voltage $\leq 25V$
- Coaxial cables for monitors

Group B

- unshielded lines for direct voltage $>60V$ and $\leq 400V$
- unshielded lines for alternating voltage $>25V$ and $\leq 400V$

Group C

- unshielded lines for direct and alternating voltage $>400V$

Group D

- Lines for H1 respectively TCP/IP

Combination of groups

Following the table you may see the conditions for the cabling of the line groups by combining the single groups:

	Group A	Group B	Group C	Group D
Group A	[1]	[2]	[3]	[4]
Group B	[2]	[1]	[3]	[4]
Group C	[3]	[3]	[1]	[4]
Group D	[4]	[4]	[4]	[1]

- [1] The lines may be installed in common bundles or cable trusses.
- [2] The lines have to be installed in different bundles or cable trusses (without min. distance).
- [3] The lines have to be installed in different bundles or cable trusses inside of cubicles and outside of the cubicle but inside the building in separated cable trusses with a min. distance of 10cm.
- [4] The lines have to be installed in different bundles or cable trusses with a min. distance of 50cm.

Line routing outside of buildings

Wherever possible, exterior cabling should be installed on metallic cable trays. A galvanic connection must be provided for joints between cable trays. You must abide by the applicable lightning protection and grounding regulations when installing exterior cables.

Lightning protection



CAUTION!

Where cables and signal lines for PLC equipment are installed outside of buildings, the conditions for internal and external lightning protection must be satisfied.

- Exterior lines should either be installed in metallic conduit pipes that is grounded on both ends or in steel-reinforced concrete cable trunks with continuously connected reinforcing.
- Signal lines should be protected against overvoltage by varistors or by lightning arrester filled with rare gas.
- Install these protective elements at the location where the cables enter the building.



Any lightning protection system must be based on an individual assessment of the entire plant. For questions please contact VIPA GmbH.

Equipotential bonding

Potential differences can occur between different sections when controllers and peripheral equipment are connected by means of non-isolated connections or the screens of screened cables are connected at both ends and grounded on different sections of the plant. One reason for a potential difference can be that different sections of the plant are powered from different power sources. These potential differences must be reduced by means of equipotential bonding conductors to ensure that the electronic equipment employed on the plant operates properly.

Rules for equipotential bonding

- The lower the impedance of the equipotential bonding conductor, the higher the effectiveness of potential equalization.
- The impedance of the equipotential bonding conductor must not exceed 10% of the impedance of the screen where screened signal lines are connected between the different sections of the plant and the screening is connected to ground/neutral on both sides.
- The cross-sectional area of the equipotential bonding conductor must be calculated to carry the maximum equalization current. The following cross-sections have been successfully employed:
 - 16mm² Cu for equipotential bonding conductors up to 200m
 - 25mm² Cu equipotential bonding conductors exceeding 200m.
- Use copper or galvanized steel for equipotential bonding conductors. These must be connected to ground/neutral by means of large-surface connections that are protected from corrosion.
- The equipotential bonding conductor should be installed in such a manner that it includes the smallest surface between the bonding conductor and the signal lines.

Screening of lines and cables

Screening is one method commonly used to reduce (attenuate) the interference pick-up from magnetic, electrical or electromagnetic fields.

- Interference on screens is conducted to ground by the conductive connection between the screen and the screening rail/enclosure. To avoid interference from these currents it is very important that the neutral connection is a low-impedance connection.
- You should only use cables that are provided with a braided screen. The degree of screening should be more than 80%.
- Avoid cables with foil-type screens as the foil can be easily damaged by tension and pressure at the point of attachment; this can result in reduced effectiveness of the screening action.
- As a rule you should always ground the screens of cables on both ends. This is the only way in which you can ensure that high frequency interference is attenuated properly.

One-sided grounding of screens

In exceptional cases it may be necessary to ground the screen on one side only. However, this will only attenuate the lowest frequencies. The one-sided grounding of screens may provide advantages when:

- It is not possible to install an equipotential bonding conductor
- Analogue signals (a few mV or mA) must be transmitted
- Foil-type screening (static screening) is employed.

You should always use metallic or metalized covers for serial data lines. Connect the screen of the data line to the cover. Do **not** connect the screen to PIN 1 of the connector! In case of stationary operations it is recommended that the remove the insulation from the screened cable without cutting the screen and to attach this point to the screening/neutral rail.

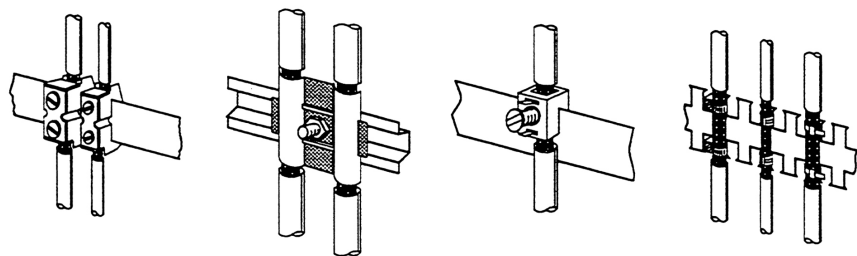


Potential differences can give rise to an equalization current via the screen connected between the two ground connections. In this case you must install an additional equipotential bonding conductor.

Connecting the screen

Please observe the following points when you handle the screens:

- Use only metallic cable clamps when connecting the screening of cables. These clamps must provide a good electrical contact and a large-surface connection to the screen.
- Attach the screens to the screening rail directly at the point where the cables enter the enclosure. The screening conductor must be continued to the module without interruption, however, it must not be connected to the module!



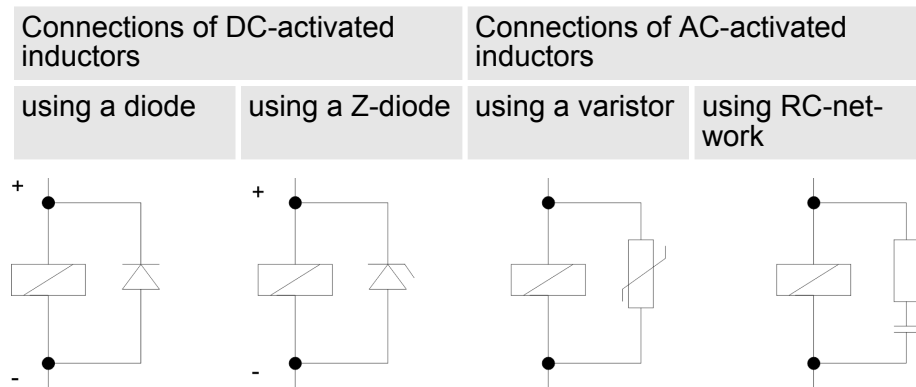
4.4 Special precautions providing high noise immunity

Inductors require snubber networks

Inductors controlled by your programmable controller (e.g. contactors and relays) do not normally require additional snubber networks or suppressors as the respective modules have been provided with the required components.

Equipotential bonding

Snubber networks must only be connected to inductors when output circuits can be disabled by means of additional contacts (e.g. relay contacts). In this case the integrated suppressors on the module are also disabled. You can connect diodes to suppress back-emc, varistors or RC-networks to the inductors.



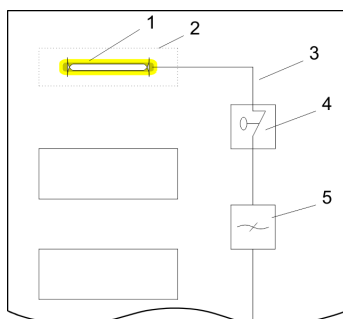
Power outlet for PGs

Every cubicle must be provided with a power outlet for the PU. These outlets must be wired to the distribution system, which is also used to connect the neutral conductor for the cubicle.

Cubicle illumination

The cubicle illumination should consist of incandescent lights, e.g. LINESTRA-lamps. Avoid using fluorescent lamps as these lamps can cause interference. If you can not avoid using fluorescent lamps you should implement the steps outlined in the following figure.

Suppression of fluorescent lamps in cubicles



- 1 Fluorescent lamp
- 2 Screen above the lamp
- 3 Screened cable
- 4 Switch with metallic cover
- 5 Line filter or screened power cable

Checklist for the EMC-compliant installation of controllers

4.5 Checklist for the EMC-compliant installation of controllers

EMV-measures	Space for Notes
Connection of the inactive parts	
You should take special care to check the connections of: <ul style="list-style-type: none"> ■ Module racks ■ Frames ■ Screen and protected earth conductor 	
Are all the inactive metal parts interconnected by means of large-surface and low-impedance connections?	
Has a proper connection been installed with respect to the ground/protected earth conductor system?	
Has the isolation been removed from varnished and anodized surfaces or have these connections been fitted with special contact washer?	
Have the connection been protected from corrosion, e.g. by means of grease?	
Have doors been grounded by means of grounding straps connected to the body of the cubicle?	
Cable routing	
Cabling divided into groups?	
Power cables (230 ... 400V) and signal lines installed in separate channels or bunches?	
Potential compensating	
When installing the equipment at separate locations, check the installation of the potential compensating line.	
Cable screen	
All covers of plugs are metallic?	
All analog and data lines installed screened?	
Line screens attached to the screening or the protected earth conductor?	
Have the screens been connected by means of large-surface and low-impedance cable clamps?	
Cable screens grounded both-sided where possible?	
Inductors	
Have the coils of contactors controlled by means of contacts been connected to snubber networks?	