

WinPLC- Analyzer



WinPLC Analyzer

PLC-Analyzer for S7 and S5 programmable controllers

VIPA[®]
art of automation



WinPLC Analyzer is an easy-to-use Windows-based software for the recording of PLC states of an S7 or S5 programmable controller. PLC operands like inputs, outputs, flags, data blocks, timers and counters can be recorded. With S7 programmable controllers, a precise cycle recording is possible. The recording mode can be influenced through various trigger possibilities. During the recording the signal characteristics can be monitored.

Fields of application

- Tracing of sporadic errors in S7 or S5 programmable controllers
- Supporting start-up
- Long-term recording
- Process optimization
- Quality assurance

Drivers included

- S7 driver RS232 and USB (virtual RS232 interface)
- S7 driver Netlink and Netlink-PRO
- S7 driver TCP/IP
- S7 driver: connection to SIMATIC®-Net*
- S5 driver AS511 via S5 PU channel

Advantage:

All available drivers are included in the basic software package.

Advantages WinPLC-Analyzer

- Easy handling via Help Wizard (context-related buttons)
- Trigger definition with STEP®-7-STL
- All drivers included in basic package
- Supporting available SIEMENS MPI adapter
- User interface switchable into German, English, Spanish, French and Italian

Article numbers:

- SW711A2LA SW980 WinPLC Analyzer for VIPA systems 100V, 200V, 300V, 300S, 500S and S7-300/400 from Siemens, incl. driver
- SW711A1LA WinPLC Analyzer for VIPA systems 100V, 200V, 300V, 300S, 500S and S7-300/400 from Siemens (in connection with WinPLC7), incl. driver

*If the SIMATIC® net drivers have been installed, the SIEMENS MPI adapter (CP512, CP5611, etc.) can be used, too. The SIMATIC® net drivers are for example installed, if STEP®7 V5.x, Teleservice V6 or Prodrive 5.6 incl. SP have been installed. In case Teleservice from SIEMENS has been installed, access via telephone line is also possible.

New in Version 3:

- With the “snapshot” function a trigger controlled copy of input/output/flag/timer/counter/data block operands can be created.
- With the function “target curve” the machine cycle can be monitored with an envelope to trace variations.
- New registration mode: offline logging

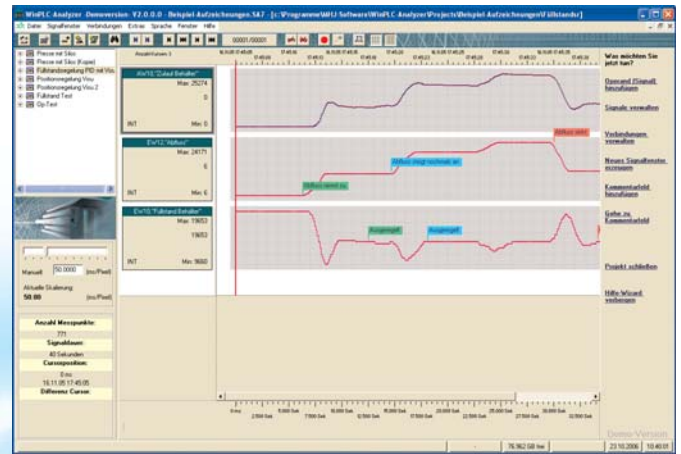


Fig.: WinPLC-Analyzer with a recording

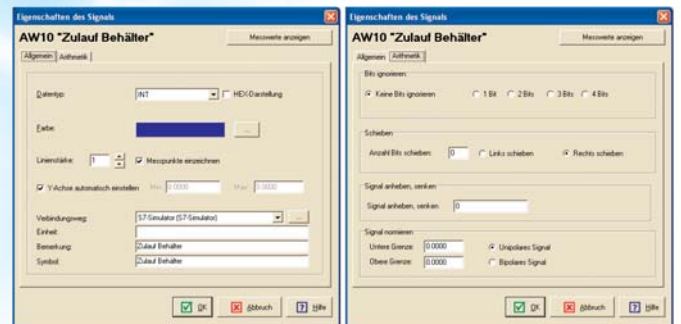


Fig.: Possible signal settings (operand)

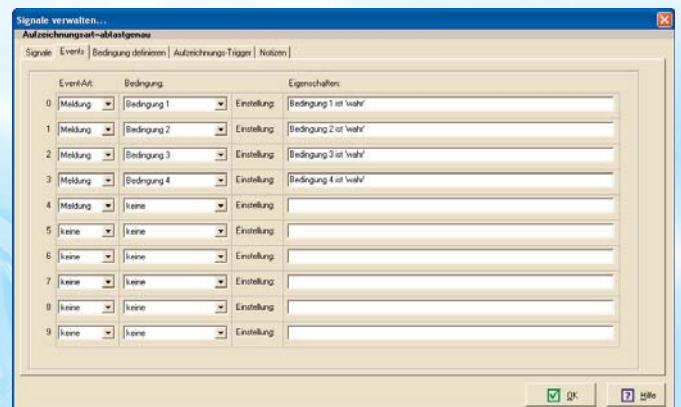


Fig.: With events messages can be produced or an SMS can be sent