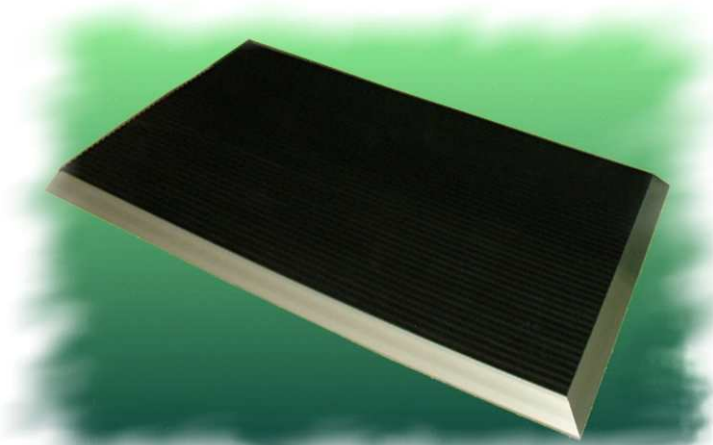
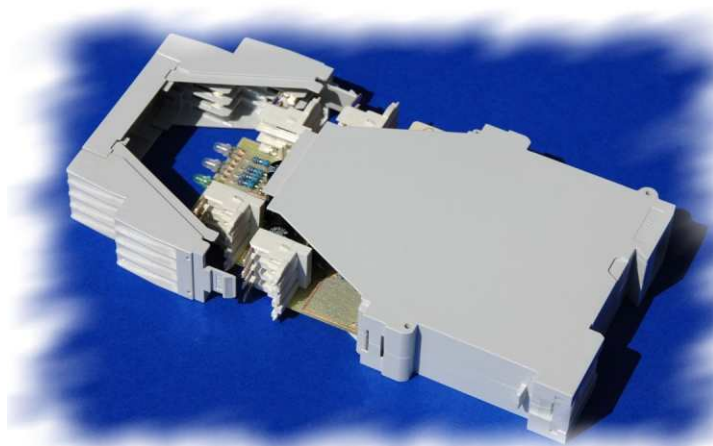




Safety engineering Product range





Many leave a trace, not many leave a lasting impression!

Due to our long experience and consequent development, **AM Safety** GmbH offers well-engineered safety technology for the protection of people and machines.

AM Safety provides the perfect protection even for the realisation of difficult safety relevant applications:

- safety controllers
- safety mats
- safety edges
- safety bumpers

Special solutions according to customer specifications can be provided!
Just expect the best, your requirements are our demand!

For our team service and quality are the prerequisites for a good business relationship.

From product development right through to production, all is provided by our own German production facilities.

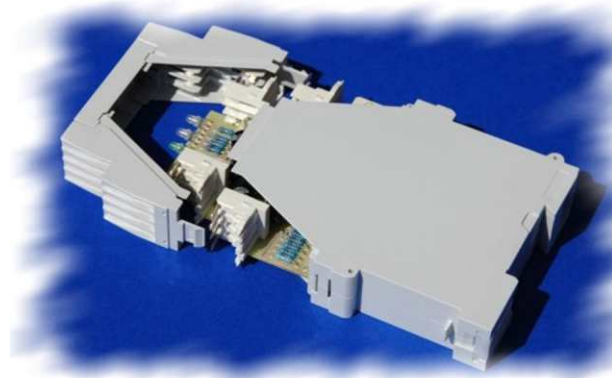
"Quality - Made in Germany" isn't just a catchword for us.

Our target is to convince you of our performance, so that your confidence turns to conviction.



Safety- Controllers

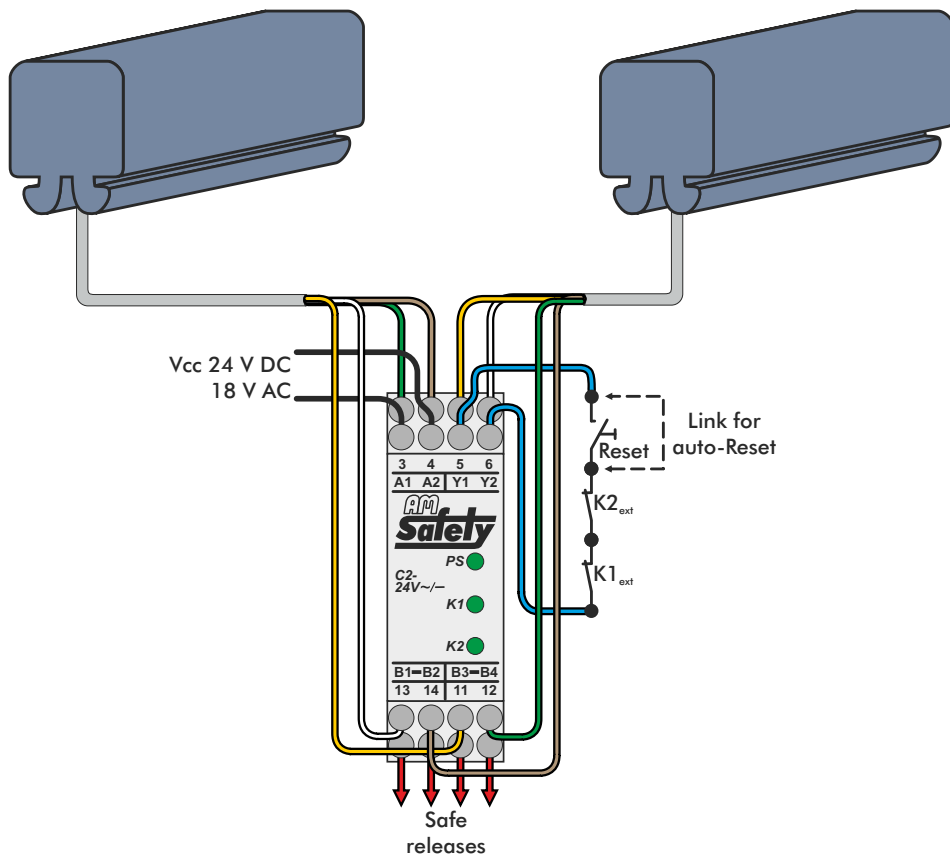
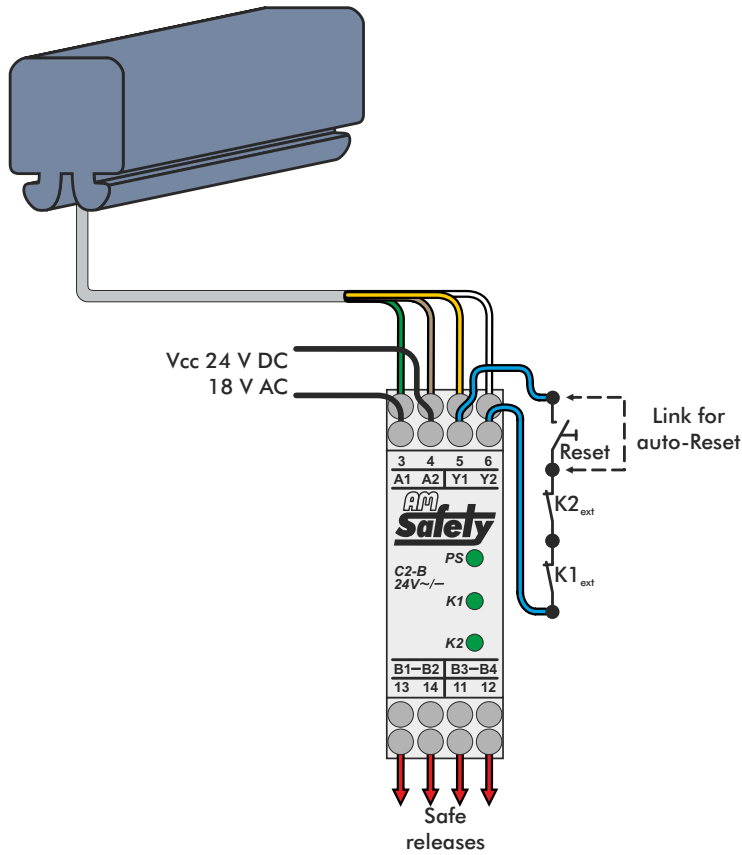
C2-B / C2-M



	C2-B	C2-M
Height	121 mm	121 mm
Width	22.5 mm	22.5 mm
Depth	90 mm	90 mm
Fastening	snapped onto standard mounting rail	snapped onto standard mounting rail
Safety-category	Cat. 3 acc. to EN 954-1	Cat. 3 acc. to EN 954-1
Protection	IP40	IP40
Storage temperature	-10° ...+70° C	-10° ...+70° C
Operating temperature	0° ...+55° C	0° ...+55° C
Supply voltage	24 V DC/18 V AC	24 V DC/18 V AC
Power consumption	~2 VA	~2 VA
Outputs	1 x N.O. / 1 x N.C. The output must be fitted with a 3.15A fuse and cannot be operated with mains voltage and low voltage at the same time	2 x N.O. The output must be fitted with a 3.15A fuse and cannot be operated with mains voltage and low voltage at the same time.
Reset	Automatic or manual	Automatic or manual
Switching power	1.000 VA / 200 W max.	1.000 VA / 200 W max.
Switching voltage	250 V, surge level 2	250 V, surge level 2
Switching current	3 A max.	3 A max.
Constant current	2 A	2 A
Response time	< 20 ms	< 20 ms
Weight	220 g	220 g
Endurance	10 x 10 ⁶ cycles	10 x 10 ⁶ cycles



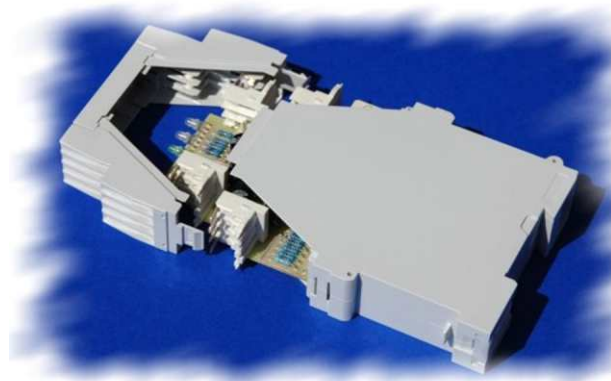
Connection examples C2-B / C2-M





Safety- Controllers

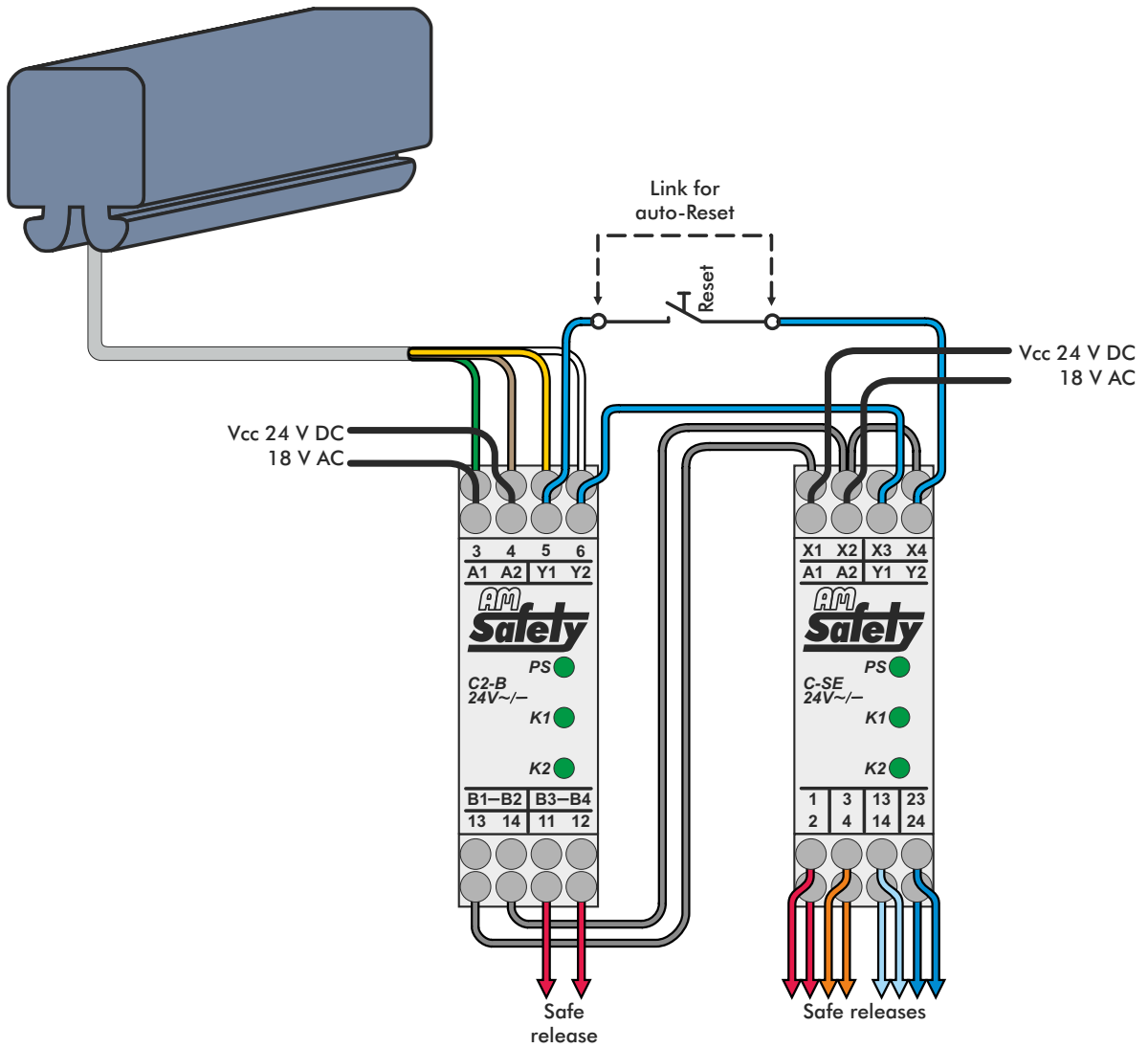
Contact extension C-SE



Height	121 mm
Width	22.5 mm
Depth	90 mm
Fastening	snapped onto standard mounting rail
Safety-category	Cat. 3 acc. to EN 954-1
Protection	IP40
Storage temperature	-10° ...+70° C
Operating temperature	0° ...+55° C
Supply voltage	24 V DC/18 V AC
Power consumption	~2 VA
Outputs	3 x N.O. / 1 x N.C. The output must be fitted with a 3.15A fuse and cannot be operated with mains voltage and low voltage at the same time
Reset	Automatic or manual
Switching power	1.000 VA / 200 W max.
Switching voltage	250 V, surge level 2
Switching current	3 A max.
Constant current	2 A
Response time	< 20 ms
Weight	220 g
Endurance	10 x 10 ⁶ cycles

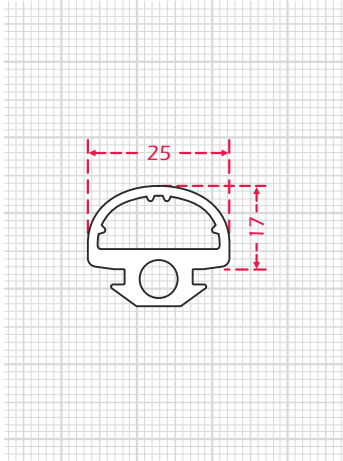


Connection example C-SE



Safety Edges

SE-17



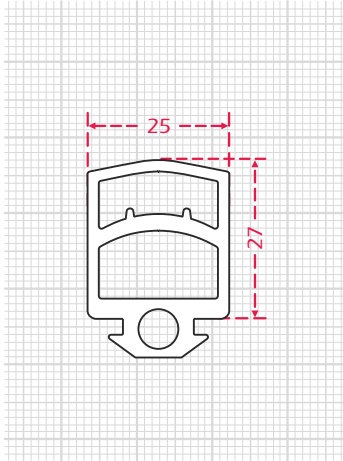
	SE-17-N
Height	17 mm
Width	25 mm
Material	NBR caoutchuc
Shore hardness	60 ± 5
Response distance test body Ø 10mm	6 mm
Deformation distance test body Ø 10mm / 150 N	10.5 mm
Overtravel distance test body Ø 10mm	4.5 mm
Response pressure test body Ø 10mm	16 N
Switching range	± 20°
Protection level	IP65
Operating temperature	+5° ... +55° C
Electrical connection	2-sided 2 x 0.25 mm ² 1-sided 4 x 0.25 mm ² Length acc. to customer specifications

A table with the resistance of NBR and EPDM caoutchuc can be supplied!



Safety Edges

SE-27



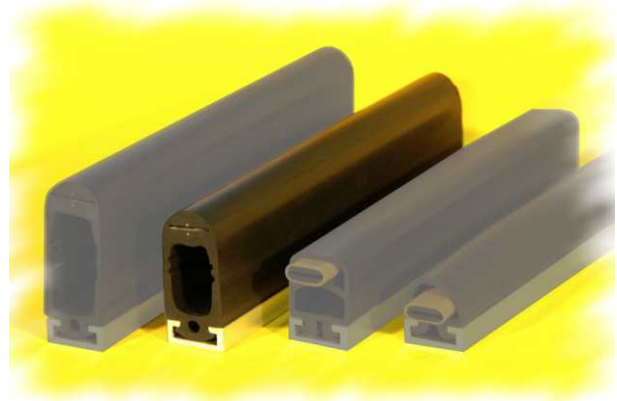
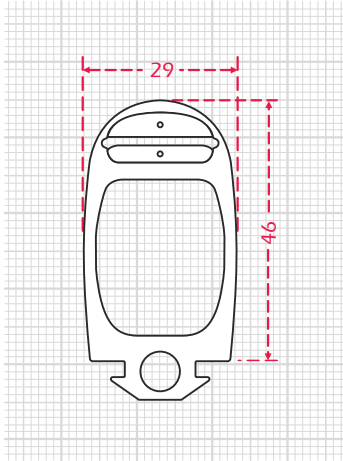
	SE-27-E	SE-27-N
Height	27 mm	27 mm
Width	25 mm	25 mm
Material	EPDM caoutchuc	NBR caoutchuc
Shore hardness	60 ± 5	60 ± 5
Response distance test body Ø 10mm	3 mm	3 mm
Deformation distance test body Ø 10mm / 150 N	17 mm	17 mm
Overtravel distance test body Ø 10mm	14 mm	14 mm
Response pressure test body Ø 10mm	12.5 N	12.5 N
Switching range	± 45°	± 45°
Protection level	IP65	IP65
Operating temperature	-15° ... +55° C	+5° ... +55° C
Electrical connection	2-sided 2 x 0.25 mm ² 1-sided 4 x 0.25 mm ² Length acc. to customer specifications	2-sided 2 x 0.25 mm ² 1-sided 4 x 0.25 mm ² Length acc. to customer specifications

A table with the resistance of NBR and EPDM caoutchuc can be supplied!



Safety Edges

RP-46AT



For self assembly available as sold by the yard !

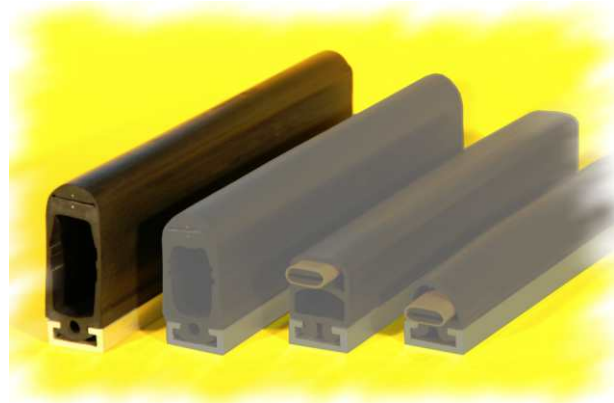
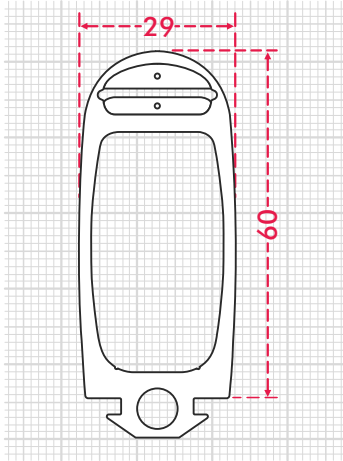
	RP-E-46AT	RP-N-46-AT
Height	46 mm	46 mm
Width	29 mm	29 mm
Material	EPDM caoutchuc	NBR caoutchuc
Shore hardness	60 ± 5	60 ± 5
Response distance test body Ø 10mm	2 mm	2.5 mm
Deformation distance test body Ø 10mm / 150 N	29 mm	28 mm
Overtravel distance test body Ø 10mm	27 mm	25.5 mm
Response pressure test body Ø 10mm	9.8 N	10 N
Switching range	± 45°	± 45°
Protection level	IP65	IP65
Operating temperature	-15° ... +55° C	+5° ... +55° C
Electrical connection	2-sided 2 x 0.25 mm ² 1-sided 4 x 0.25 mm ² Length acc. to customer specifications	2-sided 2 x 0.25 mm ² 1-sided 4 x 0.25 mm ² Length acc. to customer specifications

A table with the resistance of NBR and EPDM caoutchuc can be supplied!



Safety Edges

RP-E-60AT



For self assembly available as sold by the yard !

	RP-E-60AT
Height	60 mm
Width	29 mm
Material	EPDM caoutchuc
Shore hardness	60 ± 5
Response distance test body Ø 10mm	4 mm
Deformation distance test body Ø 10mm / 150 N	43.5 mm
Overtravel distance test body Ø 10mm	39.5 mm
Response pressure test body Ø 10mm	10.5 N
Switching range	± 45°
Protection level	IP65
Operating temperature	-15° ... +55° C
Electrical connection	2-sided 2 x 0.25 mm ² 1-sided 4 x 0.25 mm ² Length acc. to customer specifications

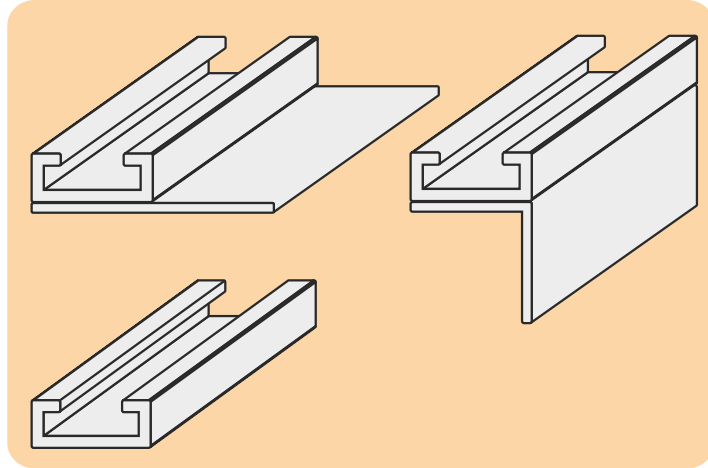
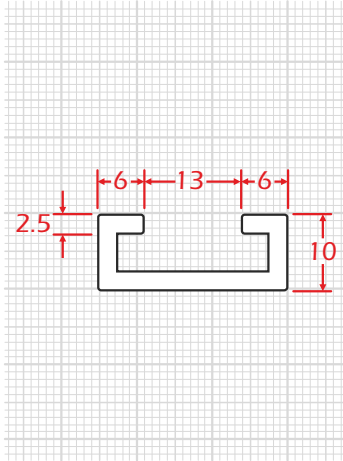
A table with the resistance of NBR and EPDM caoutchuc can be supplied!





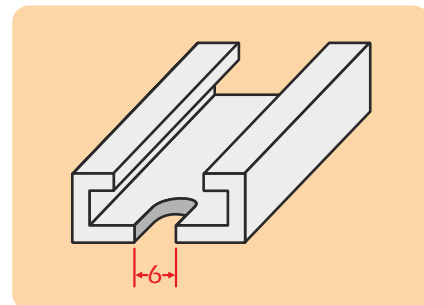
Safety Edges

Aluminium C-Profile



The **AM-Safety** aluminium C-profile is made for our safety edges and can be mounted with screws or rivets at the area to be safeguarded. Straight or angled mounting straps can be provided, according to customer specification.

To ensure that the cable is not bent or crushed our aluminium C-profiles are produced with a 6 mm wide milled groove so that the cable can be applied without damage.





Safety Edges

Company : _____

Contact : _____

Postcode / town : _____ / _____

Street : _____

Telephone no. : _____ Fax no. : _____

Quote required Amount: _____

Order

Type of profile

SE-17-N <input type="checkbox"/>	Aluminium-C-Profile
SE-27-E <input type="checkbox"/> SE-27-N <input type="checkbox"/>	without <input type="checkbox"/>
SE-46-E <input type="checkbox"/> SE-46-N <input type="checkbox"/>	with <input type="checkbox"/>
SE-60-E <input type="checkbox"/>	

Length : _____ mm

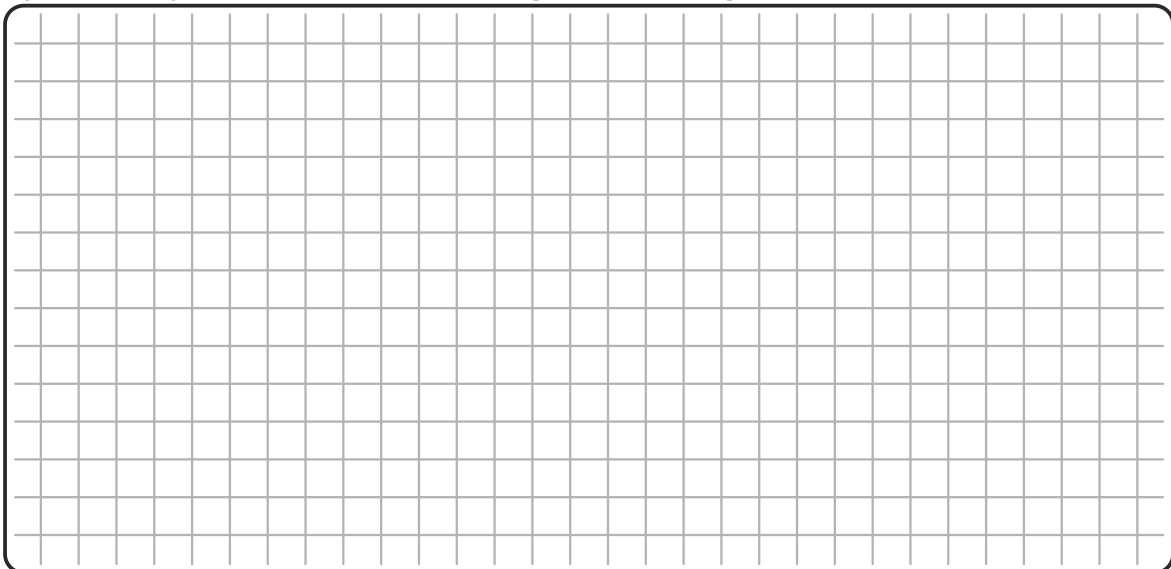
Electrical connection : 1 x 4-wire
 2 x 2-wire

Connection length : _____ mm

Controller : C2-B C2-M C-SE

Special requirements : _____

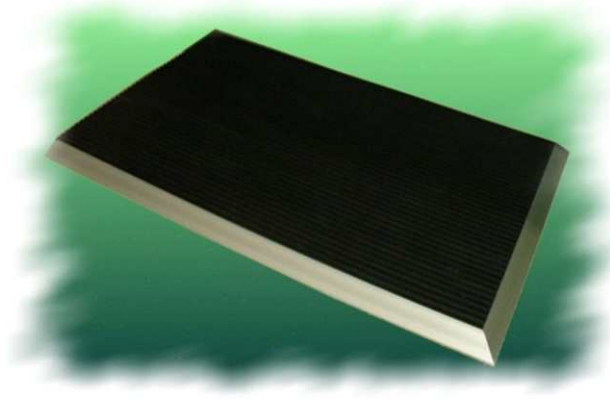
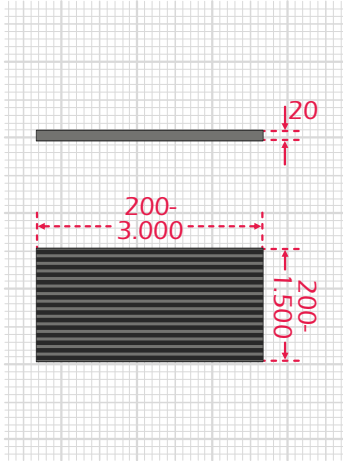
If you have any special requirements, please give us a drawing with measurements!





Safety Mats

HDM



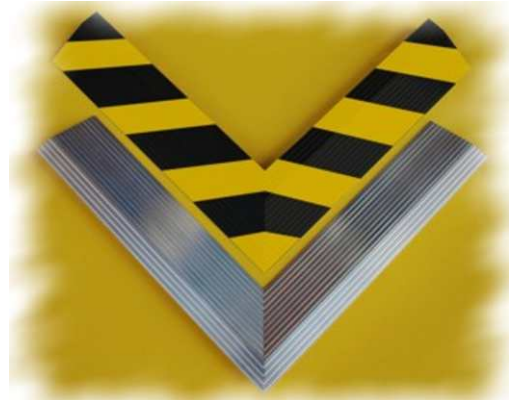
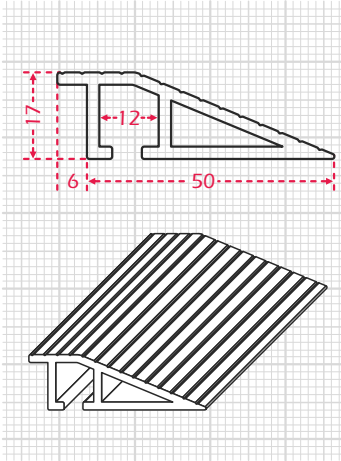
Height	20 mm, 14 mm without NBR-surface
Measurements	acc. to customer specifications, maximum 3,000 x 1,500 mm
Shape	angled, with recesses, rounded, acc. to customer specifications
Material	Base : PVC Surface : NBR-caoutchuc, others possible on request
Response distance	~4 mm
Response pressure	~120 N
Load-bearing capacity	3.000 N/cm ² max. 50.000 N/dm ²
Protection type	IP66 / 67
Operating temperature	0° ... +55° C
Weight	~24 kg/m ²
Fastening	Aluminium-frame profile or fixing holes
Electrical connection	4-pole M8 plug-in connector or fixed cable outlet, position and length acc. to customer specification
Cable cross-section	4 x 0.25 mm ²
Special features	Safety mat for heavy loads, can be used with vehicles with pneumatic tyres up to a weight of 5,000 kg





Safety Mats Accessories

Frame Profile AF



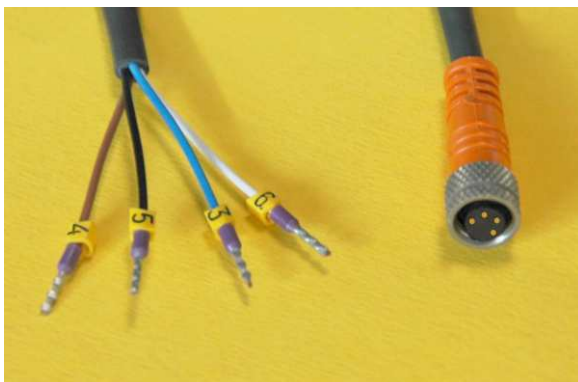
The **AM Safety** frame profile AF is mounted on the edges of the walkable sides of the safety mat. Due to the bevel of the profile the risk of stumbling is successfully prevented. The frame profile is produced as specified, mitred and step-drilled.

Using the step-drill bores on the profile AF, it is fastened to the ground which at the same time serves as a fixing for the safety mat.

For an improved optical identification of the dangerous area the frame profile can be colour coded.

We provide lengths up to 6,000 mm for upgrades or for self-made shapes and sizes..

M8-plug-in connector FC



The 4-pole plug-in connector FC is the standard connection for **AM Safety** safety mats. If the connection cable is damaged this can be exchanged without problems without having to de-install the safety mat for repair.

The plug-in connector is available with a completely prepared 4-wire lead or without lead for self-fixing





Safety Mats

Company : _____

Contact : _____

Postcode / town : _____ / _____

Street : _____

Telephone no. : _____ Fax no. : _____

Quote required Amount: _____

Order

Size of switching area : L= _____ mm W= _____ mm

Frame profile : without with please note the following page

Electrical connection : Please determine the position on the following page

1 x 4-pole M-8 plug-in connector

1 x 4-wire fixed connection

2 x 2-wire fixed connection

Connection length : _____ mm

Controller : C2-B C2-M C-SE

Special requirements : _____

If you have any special requirements, please give us a drawing with measurements!



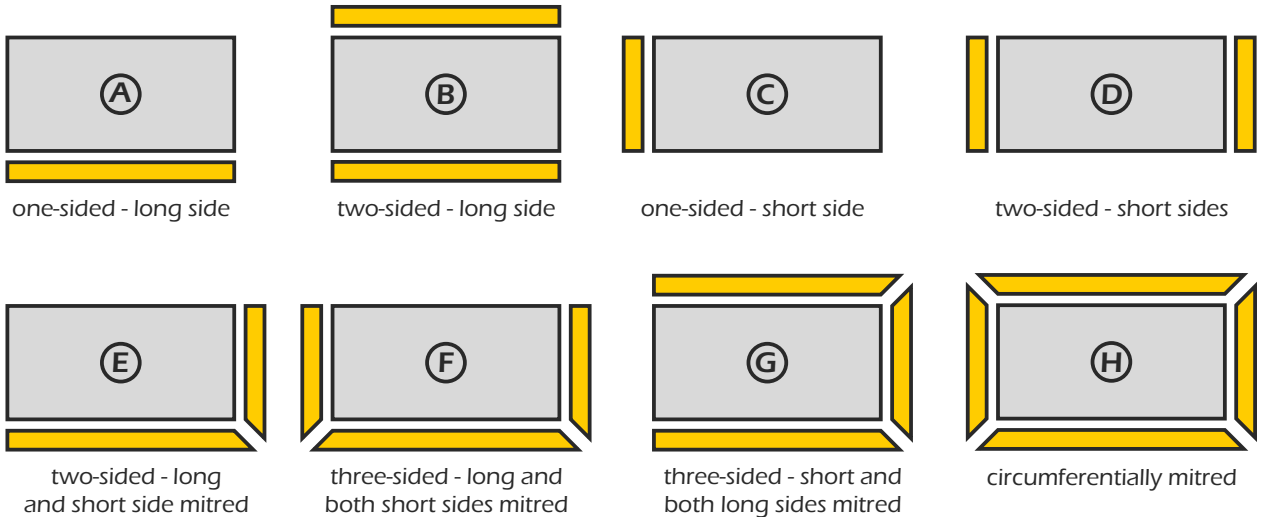
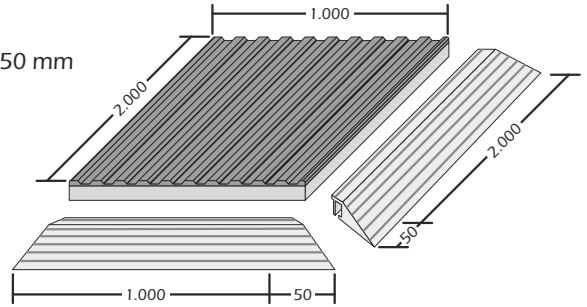


Frame Profile Type AF

For each side of a frame profile, 50 mm must be added to the size of the safety mat to ensure the outside measurements of the safety device.

Example: Area of safety mat 2,000 mm x 1,000 mm
 2-sided - one short side and one long side frame profile
 $1,000 \text{ mm} + 50 \text{ mm} = 1,050 \text{ mm}$
 $2,000 \text{ mm} + 50 \text{ mm} = 2,050 \text{ mm}$

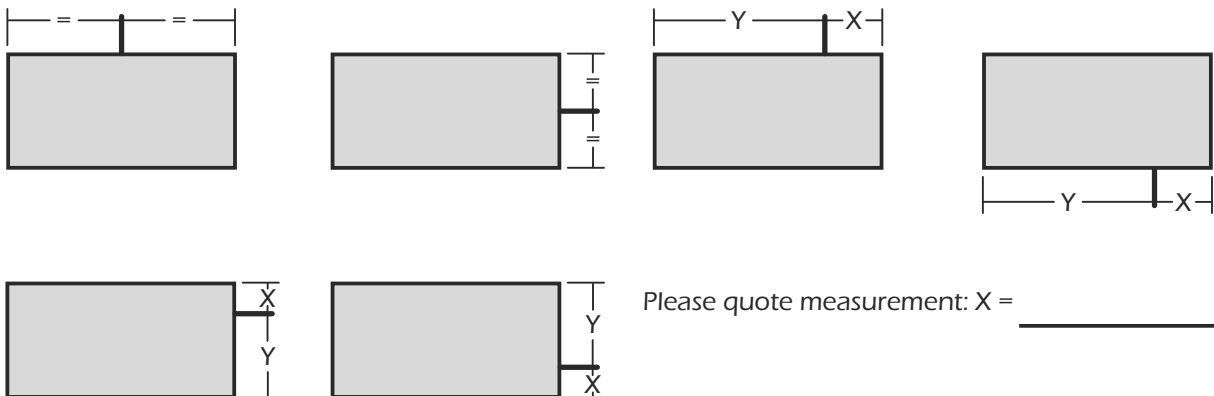
Therefore the area of the safety mat would be 1,050 mm x 2,050 mm



For other versions a drawing is required!

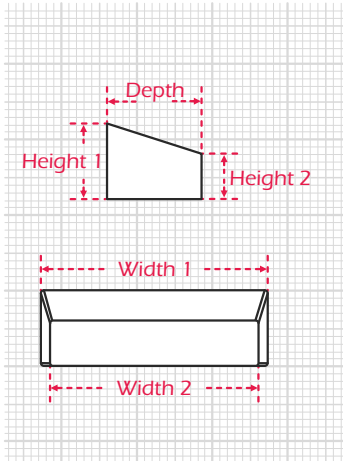
Required version (A - H): _____

Position of the connection cable



Safety Bumpers

SB-P



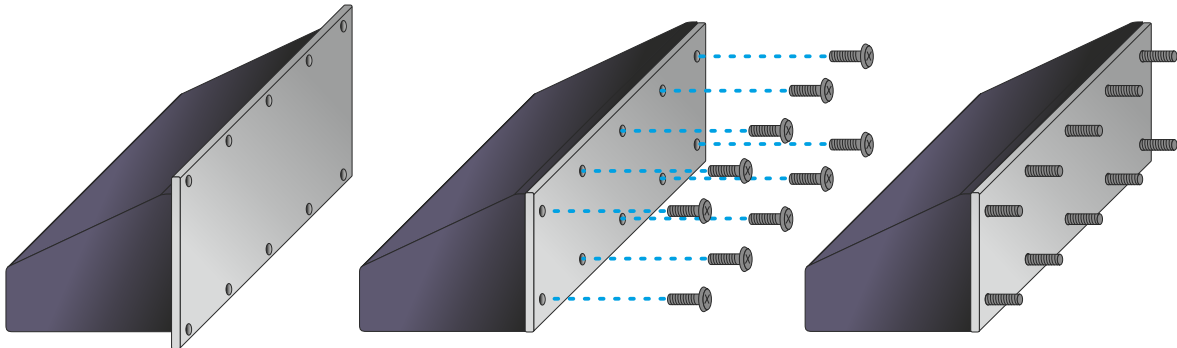
Height	1500 mm max. / acc. to width/depth ratio
Width	3000 mm max. / acc. to height/depth ratio
Depth	acc. to width/height ratio
Shape	as required
Material	Polyether foam
Surface	<ol style="list-style-type: none"> 1. Covered with black polyurethane, other colours on request, also yellow warning stripes, logos and pictograms 2. Silver coloured, flame resistant, glass fibre reinforced cover (Temperature range on request) 3. Artificial leather cover
Transducer	transducer approx. 15 mm behind the activation area
Response distance	approx. 20 mm
Response pressure	approx. 80 N (Test body Ø 80 mm)
Deformation distance	approx. 2/3 of the depth
Fastening	4 mm aluminium console with threaded bolts, thread bores or through holes - acc. to customer specification -
Electrical connection	2 x 2-wire cable 2 x 0.25 mm ² 1 x 4-wire cable 4 x 0.25 mm ² - Other connections on request -





Safety Bumpers

SB-P



The fixing of the **AM Safety** bumper can be either with through holes, thread bores or threaded bolts.

When using thread bores, the aluminium console will protrude at least 20 mm on at least one side of the bumper body.

The position and size of the through holes, thread bores and threaded bolts can be determined by the customer.



Of course the pressure sensitive bumper area can be fitted with warning stripes or the total area with your company logo, pictograms or warning notes.

For your company logo we would require a template on a 1:1 scale.





Safety Bumpers

Company : _____

Contact : _____

Postcode / town : _____ / _____

Street : _____

Telephone no. : _____ Fax no. : _____

Quote required

Order

Amount: _____

Measurements : $W_1/W_2 =$ _____ mm $H_1/H_2 =$ _____ mm $D =$ _____ mm

Type of fixture : Threaded bolts M _____ x L= _____ mm

Thread bores M _____ Through holes _____ mm

If not quoted otherwise we will determine the positioning

Cover : Polyurethane Flame resistant cover Artificial leather

Diagonal yellow stripes on sensitive area

Electrical connection : 1 x 4-wire fixed connection 2 x 2-wire fixed connection

Connection length : _____ mm

Controller : C2-B C2-M C-SE

Special requirements : _____

If you have any special requirements, please give us a drawing with measurements!

